
xlwings - Make Excel Fly!

Release dev

Zoomer Analytics LLC

May 02, 2020

1	Video course	1
2	Installation	3
2.1	Prerequisites	3
2.2	Installation	3
2.3	How to activate xlwings PRO	4
2.4	Dependencies	4
2.5	Optional Dependencies	4
2.6	Add-in	5
2.7	Update	5
3	Quickstart	7
3.1	1. Scripting: Automate/interact with Excel from Python	7
3.2	2. Macros: Call Python from Excel	8
3.3	3. UDFs: User Defined Functions (Windows only)	9
4	Connect to a Book	11
4.1	Python to Excel	11
4.2	Excel to Python (RunPython)	12
4.3	User Defined Functions (UDFs)	12
5	Syntax Overview	13
5.1	Active Objects	13
5.2	Full qualification	14
5.3	Range indexing/slicing	14
5.4	Range Shortcuts	14
5.5	Object Hierarchy	15
6	Data Structures Tutorial	17
6.1	Single Cells	17
6.2	Lists	18
6.3	Range expanding	19
6.4	NumPy arrays	19

6.5	Pandas DataFrames	19
6.6	Pandas Series	20
7	Add-in & Settings	21
7.1	Run main	21
7.2	Installation	22
7.3	Anaconda/Miniconda	22
7.4	Global Settings	22
7.5	Global Config: Ribbon/Config File	23
7.6	Workbook Directory Config: Config file	23
7.7	Workbook Config: xlwings.conf Sheet	23
7.8	Alternative: Standalone VBA module	24
8	RunPython	25
8.1	xlwings add-in	25
8.2	Call Python with “RunPython”	25
8.3	Function Arguments and Return Values	26
9	User Defined Functions (UDFs)	27
9.1	One-time Excel preparations	27
9.2	Workbook preparation	27
9.3	A simple UDF	28
9.4	Array formulas: Get efficient	28
9.5	Array formulas with NumPy and Pandas	29
9.6	@xw.arg and @xw.ret decorators	30
9.7	Dynamic Array Formulas	30
9.8	Docstrings	32
9.9	The “vba” keyword	32
9.10	Macros	32
9.11	Call UDFs from VBA	33
9.12	Asynchronous UDFs	33
10	Matplotlib	35
10.1	Getting started	35
10.2	Full integration with Excel	35
10.3	Properties	36
10.4	Getting a Matplotlib figure	38
11	Command Line Client	39
11.1	Quickstart	39
11.2	Add-in	39
11.3	RunPython	40
12	xlwings Reports	41
12.1	Quickstart	41
12.2	Frames	42
13	Deployment	45
13.1	Zip files	45

13.2	RunFrozenPython	45
13.3	Embedded Code	46
13.4	One-Click Zero-Config Installer	48
14	Troubleshooting	51
14.1	Issue: dll not found	51
15	xlwings PRO	53
15.1	PRO Features	53
15.2	More Infos	54
16	Converters and Options	55
16.1	Default Converter	56
16.2	Built-in Converters	58
16.3	Custom Converter	62
17	Debugging	65
17.1	RunPython	66
17.2	UDF debug server	66
18	Extensions	69
18.1	In-Excel SQL	69
19	Threading and Multiprocessing	71
19.1	Threading	71
19.2	Multiprocessing	72
20	Missing Features	75
20.1	Example: Workaround to use VBA's Range.WrapText	75
21	xlwings with other Office Apps	77
21.1	How To	77
21.2	Config	78
22	xlwings with R and Julia	79
22.1	R	79
22.2	Julia	80
23	Python API	83
23.1	Top-level functions	83
23.2	Object model	84
23.3	UDF decorators	112
23.4	Reports	113
24	REST API	115
24.1	Quickstart	115
24.2	Run the server	117
24.3	Indexing	117
24.4	Range Options	117
24.5	Endpoint overview	117

24.6	Endpoint details	118
	Index	145

CHAPTER 1

Video course

Those who prefer a didactically structured video course over this documentation should have a look at our video course:

<https://training.zoomeranalytics.com/p/xlwings>

It's also a great way to support the ongoing development of xlwings :)

2.1 Prerequisites

- xlwings requires an **installation of Excel** and therefore only works on **Windows** and **macOS**. Note that macOS currently does not support UDFs.
- xlwings requires at least Python 3.5.

2.2 Installation

xlwings comes pre-installed with [Anaconda](#). If you are new to Python or have troubles installing xlwings, Anaconda is highly recommended. Otherwise you can also install it manually with pip:

```
pip install xlwings
```

or conda:

```
conda install xlwings
```

Note that the official conda package might be few releases behind. You can, however, use the conda-forge channel, see: <https://anaconda.org/conda-forge/xlwings>:

```
conda install -c conda-forge xlwings
```

Note: When you are on macOS and are installing xlwings with conda (or use the version that comes with Anaconda), you'll need to run `$ xlwings runpython install` once to enable the RunPython calls from VBA.

2.3 How to activate xlwings PRO

xlwings PRO offers access to additional functionality. All PRO features are marked with xlwings *PRO* in the docs.

Note: To get access to the additional functionality of xlwings PRO, you need a license key and at least xlwings v0.19.0. Everything under the `xlwings.pro` subpackage is distributed under a commercial license. See *xlwings PRO* for more details.

To activate the license key, run the following command:

```
xlwings license update -k LICENSE_KEY
```

This will store the license key under your `xlwings.conf` file in your home folder. Alternatively, you can also store the license key under an environment variable with the name `XLWINGS_LICENSE_KEY`.

xlwings PRO requires additionally the `cryptography` and `Jinja2` packages which come pre-installed with Anaconda. Otherwise, install them via `pip` or `conda`.

With `pip`, you can also run `pip install xlwings[pro]` which will take care of the extra dependencies for xlwings PRO.

2.4 Dependencies

- **Windows:** `pywin32`, `comtypes`
- **Mac:** `psutil`, `appscript`

The dependencies are automatically installed via `conda` or `pip`.

2.5 Optional Dependencies

- NumPy
- Pandas
- Matplotlib
- Pillow/PIL
- Flask (for REST API)
- `cryptography` (for xlwings PRO)
- `Jinja2` (for xlwings PRO)

These packages are not required but highly recommended as they play very nicely with xlwings. They are all pre-installed with Anaconda. With `pip`, you can install xlwings with all optional dependencies as follows:

```
pip install xlwings[all]
```

2.6 Add-in

Please see [Add-in & Settings](#) on how to install the xlwings add-in.

Note: The add-in needs to be the same version as the Python package. Make sure to re-install the add-in after upgrading the xlwings package.

2.7 Update

To update to the latest xlwings version, run the following in a command prompt:

```
pip install --upgrade xlwings
```

or:

```
conda update -c conda-forge xlwings
```

Make sure to keep your version of the Excel add-in in sync with your Python package by running the following (make sure to close Excel first):

```
xlwings addin install
```

On **macOS only**, additionally run:

```
xlwings runpython install
```


This guide assumes you have xlwings already installed. If that's not the case, head over to [Installation](#).

3.1 1. Scripting: Automate/interact with Excel from Python

Establish a connection to a workbook:

```
>>> import xlwings as xw
>>> wb = xw.Book() # this will create a new workbook
>>> wb = xw.Book('FileName.xlsx') # connect to an existing file in the_
↳current working directory
>>> wb = xw.Book(r'C:\path\to\file.xlsx') # on Windows: use raw strings to_
↳escape backslashes
```

If you have the same file open in two instances of Excel, you need to fully qualify it and include the app instance. You will find your app instance key (the PID) via `xw.apps.keys()`:

```
>>> xw.apps[10559].books['FileName.xlsx']
```

Instantiate a sheet object:

```
>>> sht = wb.sheets['Sheet1']
```

Reading/writing values to/from ranges is as easy as:

```
>>> sht.range('A1').value = 'Foo 1'
>>> sht.range('A1').value
'Foo 1'
```

There are many **convenience features** available, e.g. Range expanding:

```
>>> sht.range('A1').value = [['Foo 1', 'Foo 2', 'Foo 3'], [10.0, 20.0, 30.0]]
>>> sht.range('A1').expand().value
[['Foo 1', 'Foo 2', 'Foo 3'], [10.0, 20.0, 30.0]]
```

Powerful converters handle most data types of interest, including Numpy arrays and Pandas DataFrames in both directions:

```
>>> import pandas as pd
>>> df = pd.DataFrame([[1,2], [3,4]], columns=['a', 'b'])
>>> sht.range('A1').value = df
>>> sht.range('A1').options(pd.DataFrame, expand='table').value
```

	a	b
0.0	1.0	2.0
1.0	3.0	4.0

Matplotlib figures can be shown as pictures in Excel:

```
>>> import matplotlib.pyplot as plt
>>> fig = plt.figure()
>>> plt.plot([1, 2, 3, 4, 5])
[<matplotlib.lines.Line2D at 0x1071706a0>]
>>> sht.pictures.add(fig, name='MyPlot', update=True)
<Picture 'MyPlot' in <Sheet [Workbook4]Sheet1>>
```

Shortcut for the active sheet: `xw.Range`

If you want to quickly talk to the active sheet in the active workbook, you don't need instantiate a workbook and sheet object, but can simply do:

```
>>> import xlwings as xw
>>> xw.Range('A1').value = 'Foo'
>>> xw.Range('A1').value
'Foo'
```

Note: You should only use `xw.Range` when interacting with Excel. In scripts, you should always go via book and sheet objects as shown above.

3.2 2. Macros: Call Python from Excel

You can call Python functions either by clicking the **Run** button (new in v0.16) in the add-in or from VBA using the `RunPython` function:

The **Run** button expects a function called `main` in a Python module with the same name as your workbook. The great thing about that approach is that you don't need your workbooks to be macro-enabled, you can save it as `xlsx`.

If you want to call any Python function no matter in what module it lives or what name it has, use `RunPython`:

```
Sub HelloWorld()
    RunPython ("import hello; hello.world()")
End Sub
```

Per default, RunPython expects `hello.py` in the same directory as the Excel file but you can change that via config. Refer to the calling Excel book by using `xw.Book.caller()`:

```
# hello.py
import numpy as np
import xlwings as xw

def world():
    wb = xw.Book.caller()
    wb.sheets[0].range('A1').value = 'Hello World!'
```

To make this run, you'll need to have the xlwings add-in installed. The easiest way to get everything set up is to use the xlwings command line client from either a command prompt on Windows or a terminal on Mac: `xlwings quickstart myproject`.

For details about the addin, see [Add-in & Settings](#).

3.3 3. UDFs: User Defined Functions (Windows only)

Writing a UDF in Python is as easy as:

```
import xlwings as xw

@xw.func
def hello(name):
    return 'Hello {}'.format(name)
```

Converters can be used with UDFs, too. Again a Pandas DataFrame example:

```
import xlwings as xw
import pandas as pd

@xw.func
@xw.arg('x', pd.DataFrame)
def correl2(x):
    # x arrives as DataFrame
    return x.corr()
```

Import this function into Excel by clicking the import button of the xlwings add-in: For further details, see [User Defined Functions \(UDFs\)](#).

CHAPTER 4

Connect to a Book

When reading/writing data to the active sheet, you don't need a book object:

```
>>> import xlwings as xw
>>> xw.Range('A1').value = 'something'
```

4.1 Python to Excel

The easiest way to connect to a book is offered by `xw.Book`: it looks for the book in all app instances and returns an error, should the same book be open in multiple instances. To connect to a book in the active app instance, use `xw.books` and to refer to a specific app, use:

```
>>> app = xw.App() # or something like xw.apps[10559] for existing apps, get
↳ the available PIDs via xw.apps.keys()
>>> app.books['Book1']
```

	<code>xw.Book</code>	<code>xw.books</code>
New book	<code>xw.Book()</code>	<code>xw.books.add()</code>
Unsaved book	<code>xw.Book('Book1')</code>	<code>xw.books['Book1']</code>
Book by (full)name	<code>xw.Book(r'C:/path/to/file.xlsx')</code>	<code>xw.books.open(r'C:/path/to/file.xlsx')</code>

Note: When specifying file paths on Windows, you should either use raw strings by putting an `r` in front of the string or use double back-slashes like so: `C:\\path\\to\\file.xlsx`.

4.2 Excel to Python (RunPython)

To reference the calling book when using `RunPython` in VBA, use `xw.Book.caller()`, see [Call Python with “RunPython”](#). Check out the section about [Debugging](#) to see how you can call a script from both sides, Python and Excel, without the need to constantly change between `xw.Book.caller()` and one of the methods explained above.

4.3 User Defined Functions (UDFs)

Unlike `RunPython`, UDFs don't need a call to `xw.Book.caller()`, see [User Defined Functions \(UDFs\)](#). However, it's available (restricted to read-only though), which sometimes proves to be useful.

CHAPTER 5

Syntax Overview

The xlwings object model is very similar to the one used by VBA.

All code samples below depend on the following import:

```
>>> import xlwings as xw
```

5.1 Active Objects

```
# Active app (i.e. Excel instance)
>>> app = xw.apps.active

# Active book
>>> wb = xw.books.active # in active app
>>> wb = app.books.active # in specific app

# Active sheet
>>> sht = xw.sheets.active # in active book
>>> sht = wb.sheets.active # in specific book

# Range on active sheet
>>> xw.Range('A1') # on active sheet of active book of active app
```

A Range can be instantiated with A1 notation, a tuple of Excel's 1-based indices, a named range or two Range objects:

```
xw.Range('A1')
xw.Range('A1:C3')
xw.Range((1,1))
```

(continues on next page)

(continued from previous page)

```
xw.Range((1,1), (3,3))
xw.Range('NamedRange')
xw.Range(xw.Range('A1'), xw.Range('B2'))
```

5.2 Full qualification

Round brackets follow Excel's behavior (i.e. 1-based indexing), while square brackets use Python's 0-based indexing/slicing. As an example, the following expressions all reference the same range:

```
xw.apps[763].books[0].sheets[0].range('A1')
xw.apps(10559).books(1).sheets(1).range('A1')
xw.apps[763].books['Book1'].sheets['Sheet1'].range('A1')
xw.apps(10559).books('Book1').sheets('Sheet1').range('A1')
```

Note that the apps keys are different for you as they are the process IDs (PID). You can get the list of your PIDs via `xw.apps.keys()`.

5.3 Range indexing/slicing

Range objects support indexing and slicing, a few examples:

```
>>> rng = xw.Book().sheets[0].range('A1:D5')
>>> rng[0, 0]
<Range [Workbook1] Sheet1!$A$1>
>>> rng[1]
<Range [Workbook1] Sheet1!$B$1>
>>> rng[:, 3:]
<Range [Workbook1] Sheet1!$D$1:$D$5>
>>> rng[1:3, 1:3]
<Range [Workbook1] Sheet1!$B$2:$C$3>
```

5.4 Range Shortcuts

Sheet objects offer a shortcut for range objects by using index/slice notation on the sheet object. This evaluates to either `sheet.range` or `sheet.cells` depending on whether you pass a string or indices/slices:

```
>>> sht = xw.Book().sheets['Sheet1']
>>> sht['A1']
<Range [Book1] Sheet1!$A$1>
>>> sht['A1:B5']
<Range [Book1] Sheet1!$A$1:$B$5>
>>> sht[0, 1]
<Range [Book1] Sheet1!$B$1>
>>> sht[:10, :10]
<Range [Book1] Sheet1!$A$1:$J$10>
```

5.5 Object Hierarchy

The following shows an example of the object hierarchy, i.e. how to get from an app to a range object and all the way back:

```
>>> rng = xw.apps[10559].books[0].sheets[0].range('A1')
>>> rng.sheet.book.app
<Excel App 10559>
```


This tutorial gives you a quick introduction to the most common use cases and default behaviour of xlwings when reading and writing values. For an in-depth documentation of how to control the behavior using the `options` method, have a look at *Converters and Options*.

All code samples below depend on the following import:

```
>>> import xlwings as xw
```

6.1 Single Cells

Single cells are by default returned either as `float`, `unicode`, `None` or `datetime` objects, depending on whether the cell contains a number, a string, is empty or represents a date:

```
>>> import datetime as dt
>>> sht = xw.Book().sheets[0]
>>> sht.range('A1').value = 1
>>> sht.range('A1').value
1.0
>>> sht.range('A2').value = 'Hello'
>>> sht.range('A2').value
'Hello'
>>> sht.range('A3').value is None
True
>>> sht.range('A4').value = dt.datetime(2000, 1, 1)
>>> sht.range('A4').value
datetime.datetime(2000, 1, 1, 0, 0)
```

6.2 Lists

- 1d lists: Ranges that represent rows or columns in Excel are returned as simple lists, which means that once they are in Python, you've lost the information about the orientation. If that is an issue, the next point shows you how to preserve this info:

```
>>> sht = xw.Book().sheets[0]
>>> sht.range('A1').value = [[1],[2],[3],[4],[5]] # Column orientation
↳ (nested list)
>>> sht.range('A1:A5').value
[1.0, 2.0, 3.0, 4.0, 5.0]
>>> sht.range('A1').value = [1, 2, 3, 4, 5]
>>> sht.range('A1:E1').value
[1.0, 2.0, 3.0, 4.0, 5.0]
```

To force a single cell to arrive as list, use:

```
>>> sht.range('A1').options(ndim=1).value
[1.0]
```

Note: To write a list in column orientation to Excel, use transpose: `sht.range('A1').options(transpose=True).value = [1,2,3,4]`

- 2d lists: If the row or column orientation has to be preserved, set `ndim` in the Range options. This will return the Ranges as nested lists (“2d lists”):

```
>>> sht.range('A1:A5').options(ndim=2).value
[[1.0], [2.0], [3.0], [4.0], [5.0]]
>>> sht.range('A1:E1').options(ndim=2).value
[[1.0, 2.0, 3.0, 4.0, 5.0]]
```

- 2 dimensional Ranges are automatically returned as nested lists. When assigning (nested) lists to a Range in Excel, it's enough to just specify the top left cell as target address. This sample also makes use of index notation to read the values back into Python:

```
>>> sht.range('A10').value = [['Foo 1', 'Foo 2', 'Foo 3'], [10, 20, 30]]
>>> sht.range((10,1), (11,3)).value
[['Foo 1', 'Foo 2', 'Foo 3'], [10.0, 20.0, 30.0]]
```

Note: Try to minimize the number of interactions with Excel. It is always more efficient to do `sht.range('A1').value = [[1,2],[3,4]]` than `sht.range('A1').value = [1, 2]` and `sht.range('A2').value = [3, 4]`.

6.3 Range expanding

You can get the dimensions of Excel Ranges dynamically through either the method `expand` or through the `expand` keyword in the `options` method. While `expand` gives back an expanded Range object, `options` are only evaluated when accessing the values of a Range. The difference is best explained with an example:

```
>>> sht = xw.Book().sheets[0]
>>> sht.range('A1').value = [[1,2], [3,4]]
>>> rng1 = sht.range('A1').expand('table') # or just .expand()
>>> rng2 = sht.range('A1').options(expand='table')
>>> rng1.value
[[1.0, 2.0], [3.0, 4.0]]
>>> rng2.value
[[1.0, 2.0], [3.0, 4.0]]
>>> sht.range('A3').value = [5, 6]
>>> rng1.value
[[1.0, 2.0], [3.0, 4.0]]
>>> rng2.value
[[1.0, 2.0], [3.0, 4.0], [5.0, 6.0]]
```

'table' expands to 'down' and 'right', the other available options which can be used for column or row only expansion, respectively.

Note: Using `expand()` together with a named Range as top left cell gives you a flexible setup in Excel: You can move around the table and change it's size without having to adjust your code, e.g. by using something like `sht.range('NamedRange').expand().value`.

6.4 NumPy arrays

NumPy arrays work similar to nested lists. However, empty cells are represented by `nan` instead of `None`. If you want to read in a Range as array, set `convert=np.array` in the `options` method:

```
>>> import numpy as np
>>> sht = xw.Book().sheets[0]
>>> sht.range('A1').value = np.eye(3)
>>> sht.range('A1').options(np.array, expand='table').value
array([[ 1.,  0.,  0.],
       [ 0.,  1.,  0.],
       [ 0.,  0.,  1.]])
```

6.5 Pandas DataFrames

```
>>> sht = xw.Book().sheets[0]
>>> df = pd.DataFrame([[1.1, 2.2], [3.3, None]], columns=['one', 'two'])
>>> df
```

(continues on next page)

(continued from previous page)

```
    one  two
0  1.1  2.2
1  3.3  NaN
>>> sht.range('A1').value = df
>>> sht.range('A1:C3').options(pd.DataFrame).value
    one  two
0  1.1  2.2
1  3.3  NaN
# options: work for reading and writing
>>> sht.range('A5').options(index=False).value = df
>>> sht.range('A9').options(index=False, header=False).value = df
```

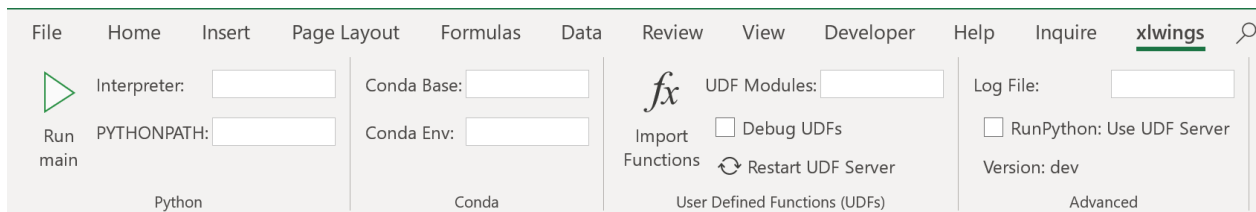
6.6 Pandas Series

```
>>> import pandas as pd
>>> import numpy as np
>>> sht = xw.Book().sheets[0]
>>> s = pd.Series([1.1, 3.3, 5., np.nan, 6., 8.], name='myseries')
>>> s
0    1.1
1    3.3
2    5.0
3    NaN
4    6.0
5    8.0
Name: myseries, dtype: float64
>>> sht.range('A1').value = s
>>> sht.range('A1:B7').options(pd.Series).value
0    1.1
1    3.3
2    5.0
3    NaN
4    6.0
5    8.0
Name: myseries, dtype: float64
```

Note: You only need to specify the top left cell when writing a list, a NumPy array or a Pandas DataFrame to Excel, e.g.: `sht.range('A1').value = np.eye(10)`

CHAPTER 7

Add-in & Settings



The xlwings add-in is the preferred way to be able to use the `Run main` button, `RunPython` or UDFs. Note that you don't need an add-in if you just want to manipulate Excel from Python via xlwings.

Note: The ribbon of the add-in is compatible with Excel ≥ 2007 on Windows and ≥ 2016 on Mac. On Mac, all UDF related functionality is not available.

Note: The add-in is password protected with the password `xlwings`. For debugging or to add new extensions, you need to unprotect it.

7.1 Run main

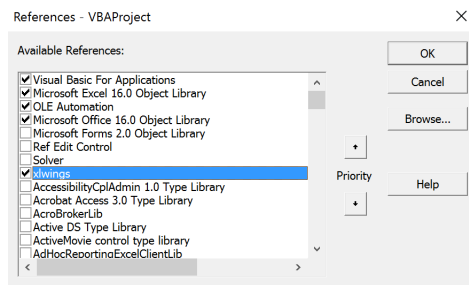
New in version 0.16.0.

The `Run main` button is the easiest to run your Python code: It runs a function called `main` in a Python module that has the same name as your workbook. This allows you to save your workbook as `xlsx` without enabling macros. The `xlwings quickstart` command will create a workbook that will automatically work with the `Run` button.

7.2 Installation

To install the add-in, it's easiest to use the command line client: `xlwings addin install`. Technically, this copies the add-in from Python's installation directory to Excel's XLSTART folder. If you encounter issues, then you can also download the add-in (`xlwings.xlam`) from the [GitHub Release page](#) (make sure you download the same version as the version of the Python package). Once downloaded, you can install the add-in by going to Developer > Excel Add-in > Browse. If you don't see Developer as tab in your ribbon, make sure to activate the tab first under File > Options > Customize Ribbon (Mac: `Cmd + ,` > Ribbon & Toolbar).

Then, to use `RunPython` or UDFs in a workbook, you need to set a reference to `xlwings` in the VBA editor, see screenshot (Windows: Tools > References..., Mac: it's on the lower left corner of the VBA editor). Note that when you create a workbook via `xlwings quickstart`, the reference is already set.



7.3 Anaconda/Miniconda

If you use Anaconda or Miniconda on Windows, you will need to set your `Conda Path` and `Conda Env` settings, as you will otherwise get errors when using NumPy etc. See next section.

7.4 Global Settings

While the defaults will often work out-of-the box, you can change the global settings directly in the add-in:

- **Interpreter:** This is the path to the Python interpreter. This works also with virtual or conda envs on Mac. If you use conda envs on Windows, then use `Conda Path` and `Conda Env` below instead. Examples: `"C:\Python35\pythonw.exe"` or `"/usr/local/bin/python3.5"`. An empty field defaults to `pythonw` that expects the interpreter to be set in the `PATH` on Windows or `.bash_profile` on Mac.
- **PYTHONPATH:** If the source file of your code is not found, add the path here.
- **Conda Path:** If you are on Windows and use Anaconda or Miniconda, then type here the path to your installation, e.g. `C:\Users\Username\Miniconda3` or `%USERPROFILE%\Anaconda`. NOTE that you need at least conda 4.6! You also need to set `Conda Env`, see next point.
- **Conda Env:** If you are on Windows and use Anaconda or Miniconda, type here the name of your conda env, e.g. `base` for the base installation or `myenv` for a conda env with the name `myenv`.

Note that this requires you to either leave the `Interpreter` blank or set it to one of `python` or `pythonw`.

- **UDF Modules:** Names of Python modules (without `.py` extension) from which the UDFs are being imported. Separate multiple modules by “;”. Example: `UDF_MODULES = "common_udfs; myproject"` The default imports a file in the same directory as the Excel spreadsheet with the same name but ending in `.py`.
- **Debug UDFs:** Check this box if you want to run the xlwings COM server manually for debugging, see [Debugging](#).
- **RunPython: Use UDF Server:** Uses the same COM Server for RunPython as for UDFs. This will be faster, as the interpreter doesn’t shut down after each call.
- **Restart UDF Server:** This shuts down the UDF Server/Python interpreter. It’ll be restarted upon the next function call.

Note: If you use `Conda Path` and `Conda Env` with UDFs, you currently can’t hide the command prompt that pops up. You can still control if the output is printed to the command prompt or not though by setting the `Interpreter` to `python` or `pythonw`, respectively.

7.5 Global Config: Ribbon/Config File

The settings in the xlwings Ribbon are stored in a config file that can also be manipulated externally. The location is

- **Windows:** `.xlwings\xlwings.conf` in your user folder
- **macOS:** `~/Library/Containers/com.microsoft.Excel/Data/xlwings.conf`

The format is as follows (keys are uppercase):

```
"INTERPRETER", "pythonw"  
"PYTHONPATH", ""
```

7.6 Workbook Directory Config: Config file

The global settings of the Ribbon/Config file can be overridden for one or more workbooks by creating a `xlwings.conf` file in the workbook’s directory.

7.7 Workbook Config: xlwings.conf Sheet

Workbook specific settings will override global (Ribbon) and workbook directory config files: Workbook specific settings are set by listing the config key/value pairs in a sheet with the name `xlwings.conf`. When you create a new project with `xlwings quickstart`, it’ll already have such a sheet but you need to rename it to `xlwings.conf` to make it active.

	A	B
1	Interpreter	pythonw
2	PYTHONPATH	
3	UDF Modules	
4	Debug UDFs	FALSE
5	Log File	
6	Use UDF Server	FALSE

7.8 Alternative: Standalone VBA module

Sometimes it might be useful to run xlwings code without having to install an add-in first. To do so, you need to use the `standalone` option when creating a new project: `xlwings quickstart myproject --standalone`.

This will add the content of the add-in as a single VBA module so you don't need to set a reference to the add-in anymore. It will still read in the settings from your `xlwings.conf` if you don't override them by using a sheet with the name `xlwings.conf`.

8.1 xlwings add-in

To get access to `Run main` (new in v0.16) button or the `RunPython` VBA function, you'll need the xlwings addin (or VBA module), see [Add-in & Settings](#).

For new projects, the easiest way to get started is by using the command line client with the quickstart command, see [Command Line Client](#) for details:

```
$ xlwings quickstart myproject
```

8.2 Call Python with “RunPython”

In the VBA Editor (Alt-F11), write the code below into a VBA module. `xlwings quickstart` automatically adds a new module with a sample call. If you rather want to start from scratch, you can add new module via `Insert > Module`.

```
Sub HelloWorld()  
    RunPython ("import hello; hello.world()")  
End Sub
```

This calls the following code in `hello.py`:

```
# hello.py  
import numpy as np  
import xlwings as xw  
  
def world():
```

(continues on next page)

(continued from previous page)

```
wb = xw.Book.caller()
wb.sheets[0].range('A1').value = 'Hello World!'
```

You can then attach HelloWorld to a button or run it directly in the VBA Editor by hitting F5.

Note: Place `xw.Book.caller()` within the function that is being called from Excel and not outside as global variable. Otherwise it prevents Excel from shutting down properly upon exiting and leaves you with a zombie process when you use `OPTIMIZED_CONNECTION = True`.

8.3 Function Arguments and Return Values

While it's technically possible to include arguments in the function call within `RunPython`, it's not very convenient. Also, `RunPython` does not allow you to return values. To overcome these issue, use UDFs, see *User Defined Functions (UDFs)* - however, this is currently limited to Windows only.

User Defined Functions (UDFs)

This tutorial gets you quickly started on how to write User Defined Functions.

Note:

- UDFs are currently only available on Windows.
 - For details of how to control the behaviour of the arguments and return values, have a look at *Converters and Options*.
 - For a comprehensive overview of the available decorators and their options, check out the corresponding API docs: *UDF decorators*.
-

9.1 One-time Excel preparations

1) Enable Trust access to the VBA project object model **under** File > Options > Trust Center > Trust Center Settings > Macro Settings

2) Install the add-in via command prompt: `xlwings addin install` (see *Add-in & Settings*).

9.2 Workbook preparation

The easiest way to start a new project is to run `xlwings quickstart myproject` on a command prompt (see *Command Line Client*). This automatically adds the xlwings reference to the generated workbook.

9.3 A simple UDF

The default addin settings expect a Python source file in the way it is created by `quickstart`:

- in the same directory as the Excel file
- with the same name as the Excel file, but with a `.py` ending instead of `.xls`.

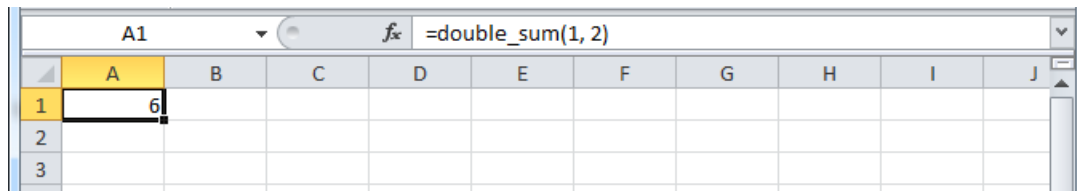
Alternatively, you can point to a specific module via `UDF Modules` in the xlwings ribbon.

Let's assume you have a Workbook `myproject.xls`, then you would write the following code in `myproject.py`:

```
import xlwings as xw

@xw.func
def double_sum(x, y):
    """Returns twice the sum of the two arguments"""
    return 2 * (x + y)
```

- Now click on `Import Python UDFs` in the xlwings tab to pick up the changes made to `myproject.py`.
- Enter the formula `=double_sum(1, 2)` into a cell and you will see the correct result:



- The docstring (in triple-quotes) will be shown as function description in Excel.

Note:

- You only need to re-import your functions if you change the function arguments or the function name.
 - Code changes in the actual functions are picked up automatically (i.e. at the next calculation of the formula, e.g. triggered by `Ctrl-Alt-F9`), but changes in imported modules are not. This is the very behaviour of how Python imports work. If you want to make sure everything is in a fresh state, click `Restart UDF Server`.
 - The `@xw.func` decorator is only used by xlwings when the function is being imported into Excel. It tells xlwings for which functions it should create a VBA wrapper function, otherwise it has no effect on how the functions behave in Python.
-

9.4 Array formulas: Get efficient

Calling one big array formula in Excel is much more efficient than calling many single-cell formulas, so it's generally a good idea to use them, especially if you hit performance problems.

You can pass an Excel Range as a function argument, as opposed to a single cell and it will show up in Python as list of lists.

For example, you can write the following function to add 1 to every cell in a Range:

```
@xw.func
def add_one(data):
    return [[cell + 1 for cell in row] for row in data]
```

To use this formula in Excel,

- Click on Import Python UDFs again
- Fill in the values in the range A1:B2
- Select the range D1:E2
- Type in the formula =add_one(A1:B2)
- Press Ctrl+Shift+Enter to create an array formula. If you did everything correctly, you'll see the formula surrounded by curly braces as in this screenshot:

	A	B	C	D	E	F	G	H	I	J
1	1	2		2	3					
2	3	4		4	5					
3										

9.4.1 Number of array dimensions: ndim

The above formula has the issue that it expects a “two dimensional” input, e.g. a nested list of the form `[[1, 2], [3, 4]]`. Therefore, if you would apply the formula to a single cell, you would get the following error: `TypeError: 'float' object is not iterable`.

To force Excel to always give you a two-dimensional array, no matter whether the argument is a single cell, a column/row or a two-dimensional Range, you can extend the above formula like this:

```
@xw.func
@xw.arg('data', ndim=2)
def add_one(data):
    return [[cell + 1 for cell in row] for row in data]
```

9.5 Array formulas with NumPy and Pandas

Often, you'll want to use NumPy arrays or Pandas DataFrames in your UDF, as this unlocks the full power of Python's ecosystem for scientific computing.

To define a formula for matrix multiplication using numpy arrays, you would define the following function:

```
import xlwings as xw
import numpy as np

@xw.func
@xw.arg('x', np.array, ndim=2)
@xw.arg('y', np.array, ndim=2)
def matrix_mult(x, y):
    return x @ y
```

Note: If you are not on Python >= 3.5 with NumPy >= 1.10, use `x.dot(y)` instead of `x @ y`.

A great example of how you can put Pandas at work is the creation of an array-based CORREL formula. Excel's version of CORREL only works on 2 datasets and is cumbersome to use if you want to quickly get the correlation matrix of a few time-series, for example. Pandas makes the creation of an array-based CORREL2 formula basically a one-liner:

```
import xlwings as xw
import pandas as pd

@xw.func
@xw.arg('x', pd.DataFrame, index=False, header=False)
@xw.ret(index=False, header=False)
def CORREL2(x):
    """Like CORREL, but as array formula for more than 2 data sets"""
    return x.corr()
```

9.6 @xw.arg and @xw.ret decorators

These decorators are to UDFs what the `options` method is to Range objects: they allow you to apply converters and their options to function arguments (`@xw.arg`) and to the return value (`@xw.ret`). For example, to convert the argument `x` into a pandas DataFrame and suppress the index when returning it, you would do the following:

```
@xw.func
@xw.arg('x', pd.DataFrame)
@xw.ret(index=False)
def myfunction(x):
    # x is a DataFrame, do something with it
    return x
```

For further details see the *Converters and Options* documentation.

9.7 Dynamic Array Formulas

Note: If your version of Excel supports the new native dynamic arrays, then you don't have to do anything special, and you shouldn't use the `expand` decorator! To check if your version of Excel supports it, see if you have the `=UNIQUE()` formula available. Native dynamic arrays were introduced in Office 365 Insider Fast at the end of September 2018.

As seen above, to use Excel's array formulas, you need to specify their dimensions up front by selecting the result array first, then entering the formula and finally hitting `Ctrl-Shift-Enter`. In practice, it often turns out to be a cumbersome process, especially when working with dynamic arrays such as time series data. Since v0.10, xlwings offers dynamic UDF expansion:

This is a simple example that demonstrates the syntax and effect of UDF expansion:

```
import numpy as np

@xw.func
@xw.ret(expand='table')
def dynamic_array(r, c):
    return np.random.randn(int(r), int(c))
```

	A	B	C	D	E
1		rows:	columns:		
2		5	2		
3					
4		2.01156647	-0.0985618		
5		-0.2152179	-0.7541961		
6		0.37168657	-0.1978662		
7		-1.0643897	1.37592295		
8		0.5272535	-0.0508628		
9					

	A	B	C	D	E	F
1		rows:	columns:			
2		2	5			
3						
4		-0.6788379	-1.0009999	-0.6342434	-0.9362773	1.02582914
5		-2.1803953	0.18511092	0.3121721	0.20600051	0.3799863
6						

Note:

- Expanding array formulas will overwrite cells without prompting
- Pre v0.15.0 doesn't allow to have volatile functions as arguments, e.g. you cannot use functions like `=TODAY()` as arguments. Starting with v0.15.0, you can use volatile functions as input, but the UDF will be called more than 1x.
- Dynamic Arrays have been refactored with v0.15.0 to be proper legacy arrays: To edit a dynamic array with xlwings `>=` v0.15.0, you need to hit `Ctrl-Shift-Enter` while in the top left cell. Note that you don't have to do that when you enter the formula for the first time.

9.8 Docstrings

The following sample shows how to include docstrings both for the function and for the arguments `x` and `y` that then show up in the function wizard in Excel:

```
import xlwings as xw

@xw.func
@xw.arg('x', doc='This is x.')
@xw.arg('y', doc='This is y.')
def double_sum(x, y):
    """Returns twice the sum of the two arguments"""
    return 2 * (x + y)
```

9.9 The “vba” keyword

It’s often helpful to get the address of the calling cell. Right now, one of the easiest ways to accomplish this is to use the `vba` keyword. `vba`, in fact, allows you to access any available VBA expression e.g. `Application`. Note, however, that currently you’re acting directly on the `pywin32` COM object:

```
@xw.func
@xw.arg('xl_app', vba='Application')
def get_caller_address(xl_app):
    return xl_app.Caller.Address
```

9.10 Macros

On Windows, as alternative to calling macros via *RunPython*, you can also use the `@xw.sub` decorator:

```
import xlwings as xw

@xw.sub
def my_macro():
    """Writes the name of the Workbook into Range("A1") of Sheet 1"""
    wb = xw.Book.caller()
    wb.sheets[0].range('A1').value = wb.name
```

After clicking on Import Python UDFs, you can then use this macro by executing it via `Alt + F8` or by binding it e.g. to a button. To to the latter, make sure you have the Developer tab selected under `File > Options > Customize Ribbon`. Then, under the Developer tab, you can insert a button via `Insert > Form Controls`. After drawing the button, you will be prompted to assign a macro to it and you can select `my_macro`.

9.11 Call UDFs from VBA

Imported functions can also be used from VBA. For example, for a function returning a 2d array:

```
Sub MySub()

Dim arr() As Variant
Dim i As Long, j As Long

    arr = my_imported_function(...)

    For j = LBound(arr, 2) To UBound(arr, 2)
        For i = LBound(arr, 1) To UBound(arr, 1)
            Debug.Print "(" & i & "," & j & ")", arr(i, j)
        Next i
    Next j

End Sub
```

9.12 Asynchronous UDFs

New in version v0.14.0.

xlwings offers an easy way to write asynchronous functions in Excel. Asynchronous functions return immediately with #N/A waiting.... While the function is waiting for its return value, you can use Excel to do other stuff and whenever the return value is available, the cell value will be updated.

The only available mode is currently `async_mode='threading'`, meaning that it's useful for I/O-bound tasks, for example when you fetch data from an API over the web.

You make a function asynchronous simply by giving it the respective argument in the function decorator. In this example, the time consuming I/O-bound task is simulated by using `time.sleep`:

```
import xlwings as xw
import time

@xw.func(async_mode='threading')
def myfunction(a):
    time.sleep(5) # long running tasks
    return a
```

You can use this function like any other xlwings function, simply by putting `=myfunction("abcd")` into a cell (after you have imported the function, off course).

Note that xlwings doesn't use the native asynchronous functions that were introduced with Excel 2010, so xlwings asynchronous functions are supported with any version of Excel.

Using `pictures.add()`, it is easy to paste a Matplotlib plot as picture in Excel.

10.1 Getting started

The easiest sample boils down to:

```
>>> import matplotlib.pyplot as plt
>>> import xlwings as xw

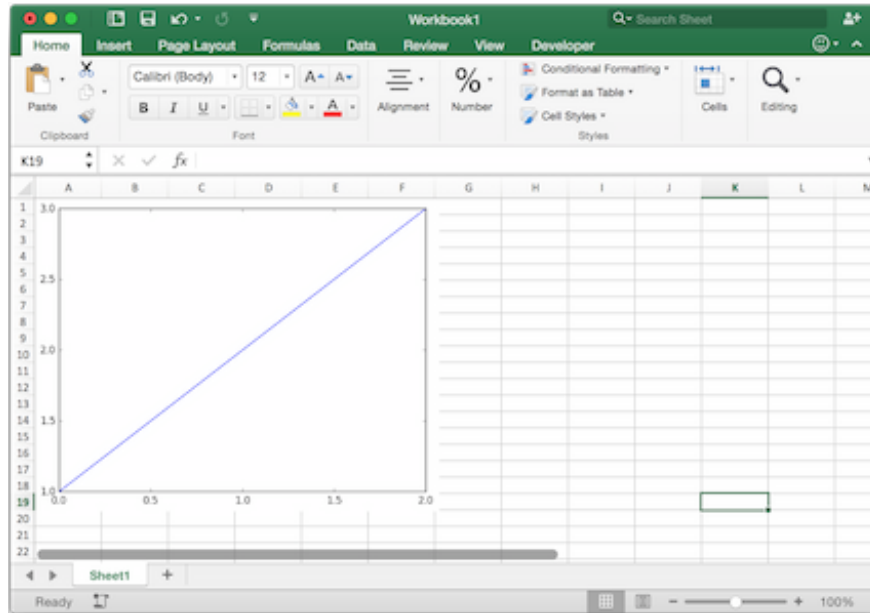
>>> fig = plt.figure()
>>> plt.plot([1, 2, 3])

>>> sht = xw.Book().sheets[0]
>>> sht.pictures.add(fig, name='MyPlot', update=True)
```

Note: If you set `update=True`, you can resize and position the plot on Excel: subsequent calls to `pictures.add()` with the same name ('MyPlot') will update the picture without changing its position or size.

10.2 Full integration with Excel

Calling the above code with *RunPython* and binding it e.g. to a button is straightforward and works cross-platform.



However, on Windows you can make things feel even more integrated by setting up a *UDF* along the following lines:

```
@xw.func
def myplot(n):
    sht = xw.Book.caller().sheets.active
    fig = plt.figure()
    plt.plot(range(int(n)))
    sht.pictures.add(fig, name='MyPlot', update=True)
    return 'Plotted with n={}'.format(n)
```

If you import this function and call it from cell B2, then the plot gets automatically updated when cell B1 changes:

10.3 Properties

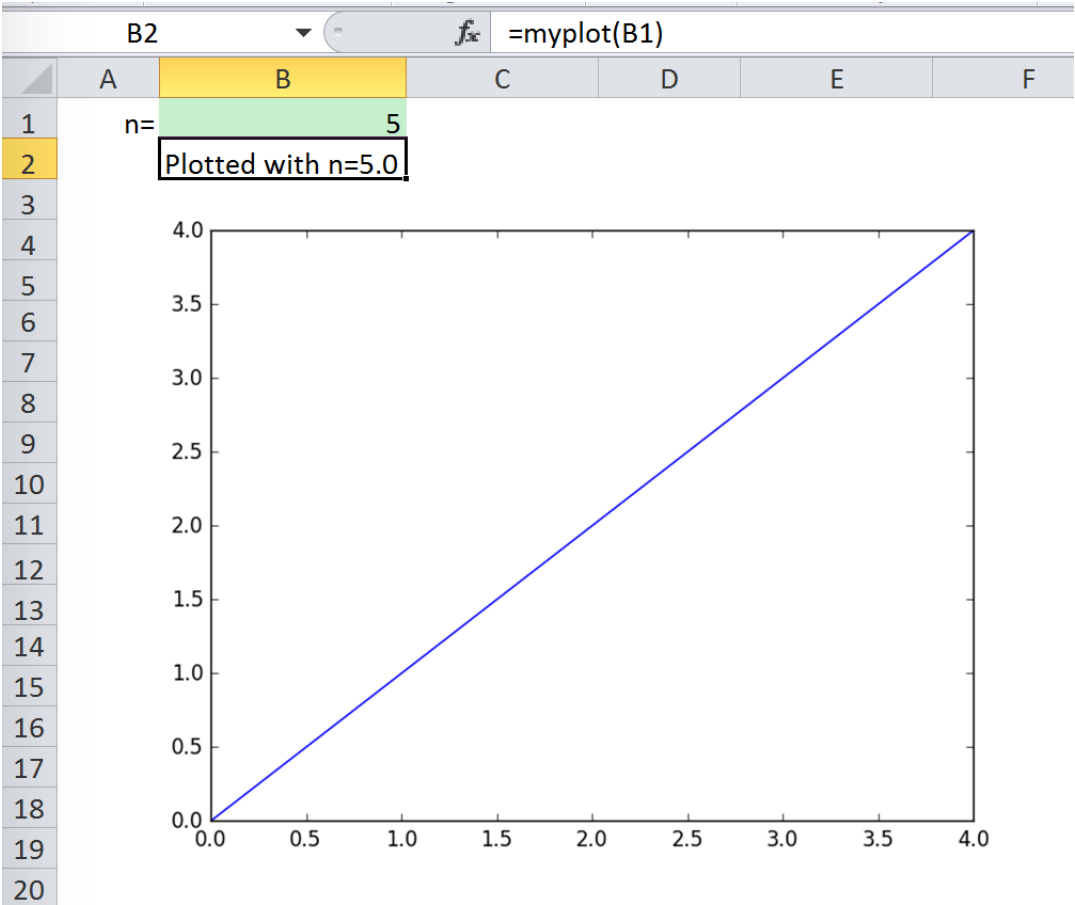
Size, position and other properties can either be set as arguments within `pictures.add()`, or by manipulating the picture object that is returned, see `xlwings.Picture()`.

For example:

```
>>> sht = xw.Book().sheets[0]
>>> sht.pictures.add(fig, name='MyPlot', update=True,
                     left=sht.range('B5').left, top=sht.range('B5').top)
```

or:

```
>>> plot = sht.pictures.add(fig, name='MyPlot', update=True)
>>> plot.height /= 2
>>> plot.width /= 2
```



10.4 Getting a Matplotlib figure

Here are a few examples of how you get a matplotlib figure object:

- via PyPlot interface:

```
import matplotlib.pyplot as plt
fig = plt.figure()
plt.plot([1, 2, 3, 4, 5])
```

or:

```
import matplotlib.pyplot as plt
plt.plot([1, 2, 3, 4, 5])
fig = plt.gcf()
```

- via object oriented interface:

```
from matplotlib.figure import Figure
fig = Figure(figsize=(8, 6))
ax = fig.add_subplot(111)
ax.plot([1, 2, 3, 4, 5])
```

- via Pandas:

```
import pandas as pd
import numpy as np

df = pd.DataFrame(np.random.rand(10, 4), columns=['a', 'b', 'c', 'd'])
ax = df.plot(kind='bar')
fig = ax.get_figure()
```

CHAPTER 11

Command Line Client

xlwings comes with a command line client that makes it easy to set up workbooks and install the add-in. On Windows, type the commands into a Command Prompt, on Mac, type them into a Terminal.

11.1 Quickstart

- `xlwings quickstart myproject`

This command is by far the fastest way to get off the ground: It creates a new folder `myproject` with an Excel workbook that already has the reference to the xlwings addin and a Python file, ready to be used right away:

```
myproject
|--myproject.xlsm
|--myproject.py
```

If you want to use xlwings via VBA module instead of addin, use the `--standalone` or `-s` flag:

```
xlwings quickstart myproject --standalone
```

11.2 Add-in

The `addin` command makes it easy on Windows to install/remove the addin. On Mac, you need to install it manually, but `xlwings addin install` will show you how to do it.

Note: Excel needs to be closed before installing/updating the add-in via command line. If you're still getting an error, start the Task Manager and make sure there are no `EXCEL.EXE` processes left.

- `xlwings addin install`: Copies the xlwings add-in to the XLSTART folder
- `xlwings addin update`: Replaces the current add-in with the latest one
- `xlwings addin remove`: Removes the add-in from the XLSTART folder
- `xlwings addin status`: Shows if the add-in is installed together with the installation path

After installing the add-in, it will be available as xlwings tab on the Excel Ribbon.

New in version 0.6.0.

11.3 RunPython

Only required if you are on Mac, are using Excel 2016 and have xlwings installed via conda or as part of Anaconda. To enable the `RunPython` calls in VBA, run this one time:

```
xlwings runpython install
```

Alternatively, install xlwings with `pip`.

New in version 0.7.0.

CHAPTER 12

xlwings Reports

This feature requires xlwings *PRO*.

See also the [Reports API reference](#).

12.1 Quickstart

xlwings Reports is part of xlwings PRO and a solution for template based Excel and PDF reporting. It allows business users without Python knowledge to create & maintain Excel templates without having to go back to a Python developer for every change: xlwings Reports separates the Python code (that gets and prepares all the data) from the Excel template (that defines which data goes where and how it should be formatted). See also the [xlwings Reports homepage](#).

Start by creating the following Python script `my_template.py`:

```
from xlwings.pro.reports import create_report
import pandas as pd

df = pd.DataFrame(data=[[1,2],[3,4]])
wb = create_report('my_template.xlsx', 'my_report.xlsx', title='MyTitle',
    ↪df=df)
```

Then create the following Excel file called `my_template.xlsx`:

	A	B	C	D
1	{{ title }}			
2				
3	My DataFrame			
4	{{ df }}			
5				
6				

Now run the Python script:

```
python my_template.py
```

This will copy the template and create the following output by replacing the variables in double curly braces with the value from the Python variable:

	A	B	C	D
1	MyTitle			
2				
3	My DataFrame			
4		0	1	
5	0	1	2	
6	1	3	4	
7				

Apart from Strings and Pandas DataFrames, you can also use numbers, lists, simple dicts, NumPy arrays, Matplotlib figures and PIL Image objects that have a filename.

By default, xlwings Reports overwrites existing values in templates if there is not enough free space for your variable. If you want your rows to dynamically shift according to the height of your array, use [Frames](#).

12.2 Frames

Frames are vertical containers in which content is being aligned according to their height. That is, within Frames:

- Variables do not overwrite existing cell values as they do without Frames.
- Table formatting is applied to all data rows.

To use Frames, insert `<frame>` into **row 1** of your Excel template wherever you want a new dynamic column to start. Row 1 will be removed automatically when creating the report. Frames go from one `<frame>` to the next `<frame>` or the right border of the used range.

How Frames behave is best demonstrated with an example: The following screenshot defines two frames. The first one goes from column A to column E and the second one goes from column F to column I.

You can define and format tables by formatting exactly

- one header and
- one data row

as shown in the screenshot:

	A	B	C	D	E	F	G	H	I
1	<frame>					<frame>			
2	Table 1					Table 3			
3	{{ df1 }}					{{ df2 }}			
4									
5									
6	Table 2					Table 4			
7	{{ df2 }}					{{ df1 }}			
8									

Running the following code:


```
from xlwings.pro.reports import create_report
import pandas as pd

df1 = pd.DataFrame([[1, 2, 3], [4, 5, 6], [7, 8, 9]])
df2 = pd.DataFrame([[1, 2, 3], [4, 5, 6], [7, 8, 9], [10, 11, 12], [13, 14, 15]])

data = dict(df1=df1, df2=df2)

create_report('my_template.xlsx',
              'my_report.xlsx',
              **data)
```

will generate this report:

	A	B	C	D	E	F	G	H	I
1	Table 1					Table 3			
2		0	1	2			0	1	2
3		0	1	2			0	1	2
4		1	4	5			1	4	5
5		2	7	8			2	7	8
6							3	10	11
7	Table 2						4	13	14
8		0	1	2					
9		0	1	2		Table 4			
10		1	4	5			0	1	2
11		2	7	8			0	1	2
12		3	10	11			1	4	5
13		4	13	14			2	7	8

13.1 Zip files

New in version 0.15.2.

To make it easier to distribute, you can zip up your Python code into a zip file. If you use UDFs, this will disable the automatic code reload, so this is a feature meant for distribution, not development. In practice, this means that when your code is inside a zip file, you'll have to click on re-import to get any changes.

If you name your zip file like your Excel file (but with `.zip` extension) and place it in the same folder as your Excel workbook, xlwings will automatically find it (similar to how it works with a single python file).

If you want to use a different directory, make sure to add it to the `PYTHONPATH` in your config (Ribbon or config file):

```
PYTHONPATH, "C:\path\to\myproject.zip"
```

13.2 RunFrozenPython

Changed in version 0.15.2.

You can use a freezer like PyInstaller, cx_Freeze, py2exe etc. to freeze your Python module into an executable so that the recipient doesn't have to install a full Python distribution.

Note:

- This does not work with UDFs.
- Currently only available on Windows, but support for Mac should be easy to add.

- You need at least 0.15.2 to support arguments whereas the syntax changed in 0.15.6
-

Use it as follows:

```
Sub MySample()  
    RunFrozenPython "C:\path\to\dist\myproject\myproject.exe", "arg1 arg2"  
End Sub
```

13.3 Embedded Code

This feature requires xlwings *PRO*.

xlwings PRO allows you to store your Python code directly in Excel so you don't have to distribute separate Python files.

All you have to do is:

- Name a sheet with a `.py` ending (can also be a hidden or very hidden sheet)
- Copy/paste your Python source code

Note: Make sure to select `Paste Special > Text` as you might otherwise get errors with indentation or unrecognized characters.

Then, use the VBA function `RunPython ("import mymodule;mymodule.myfunction()")` as usual.

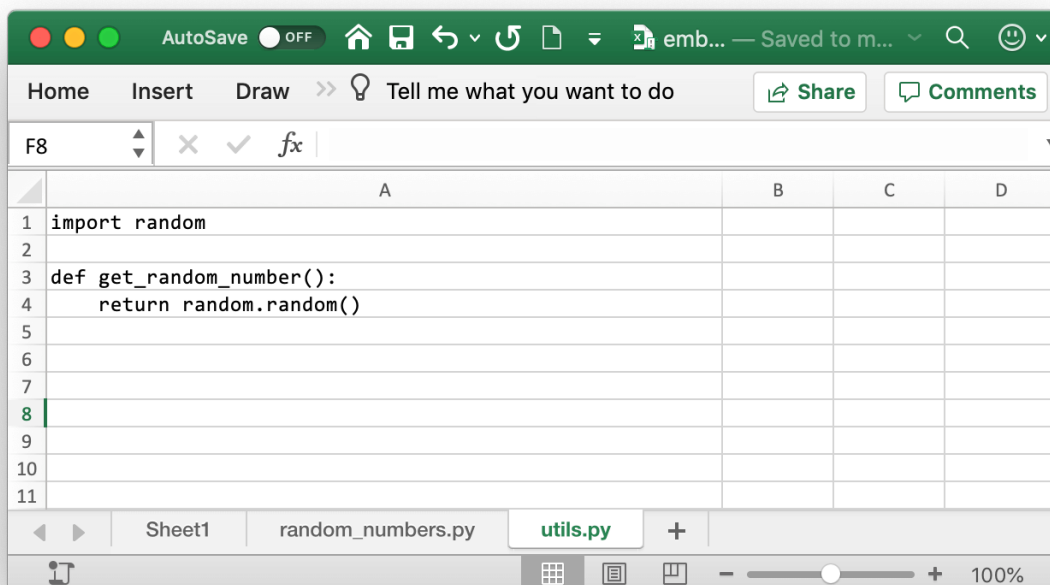
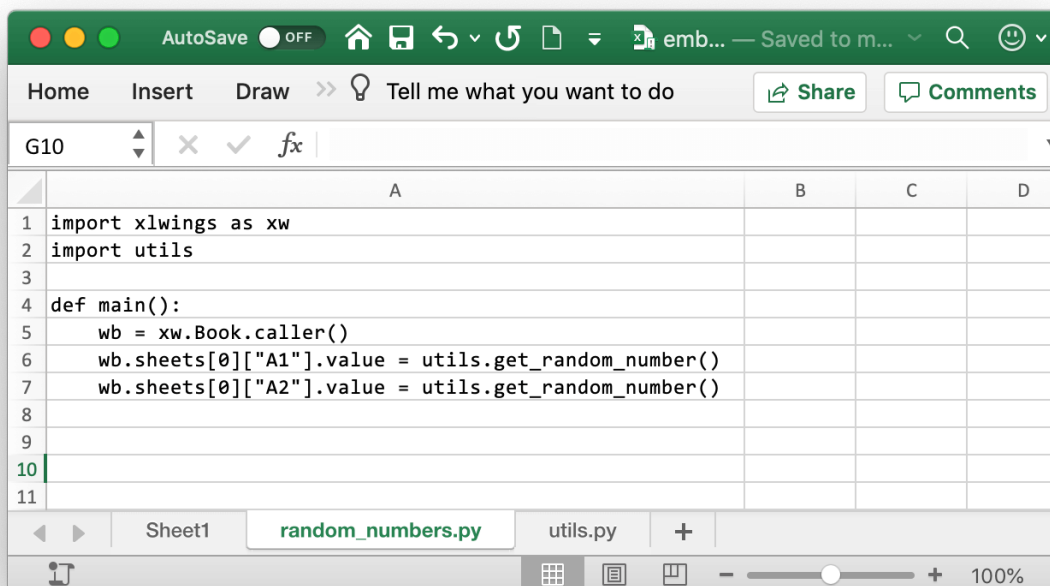
Note that you can have multiple Excel sheets and import them like normal Python files. Consider this example:

You can call this function from VBA like so:

```
Sub RandomNumbers()  
    RunPython ("import random_numbers;random_numbers.main()")  
End Sub
```

Note: UDFs modules don't have to be added to the `UDF Modules` explicitly when using embedded code. However, in contrast to how it works with external files, you currently need to re-import the functions when you change them.

Note: While you can hide your sheets with your code, they will be written to a temporary directory in clear text.



13.4 One-Click Zero-Config Installer

This feature requires xlwings *PRO*.

With xlwings PRO you get access to a private GitHub repository that will build your custom installer in the cloud — no local installation required. Using a custom installer to deploy the Python runtime has the following advantages:

- Zero Python knowledge required from end users
- Zero configuration required by end users
- No admin rights required
- Works for both UDFs and RunPython
- Works for external distribution
- Easy to deploy updates

13.4.1 End User Instructions

- **Installing**

Give the end user your Excel workbook and the installer. The user only has to double-click the installer and confirm a few prompts — no configuration is required.

- **Updating**

If you use the embedded code feature (see: *Embedded Code*), you can deploy updates by simply giving the user a new Excel file. Only when you change a dependency, you will need to create a new installer.

- **Uninstalling**

The application can be uninstalled again via Window Settings > Apps & Features.

13.4.2 Build the Installer

Before you can build the installer, the project needs to be configured correctly, see below.

In the GitHub repo, go to `x releases > Draft/Create a new release`. Add a version like `1.0.0` to `Tag version`, then hit `Publish release`.

Wait a few minutes and refresh the page: the installer will appear under the release from where you can download it. You can follow the progress under the `Actions` tab.

13.4.3 Configuration

Excel file

You can add your Excel file to the repository if you like but it's not a requirement. Configure the Excel file as follows:

- Add the standalone xlwings VBA module, e.g. via `xlwings quickstart project --standalone`
- Make sure that in the VBA editor (Alt-F11) under Tools > References xlwings is unchecked
- Rename the `_xlwings.conf` sheet into `xlwings.conf`
- In the `xlwings.conf` sheet, as Interpreter, set the following value:
`%LOCALAPPDATA%\project` while replacing `project` with the name of your project
- If you like, you can hide the `xlwings.conf` sheet

Source code

Source code can either be embedded in the Excel file (see [Embedded Code](#)) or added to the `src` directory. The first option requires `xlwings-pro` in `requirements.txt`, the second option will also work with `xlwings`.

Dependencies

Add your dependencies to `requirements.txt`. For example:

```
xlwings==0.18.0
numpy==1.18.2
```

Code signing (optional)

Using a code sign certificate will show a verified publisher in the installation prompt. Without it, it will show an unverified publisher.

- Store your code sign certificate as `sign_cert_file` in the root of this repository (make sure your repo is private).
- Go to Settings > Secrets and add the password as `code_sign_password`.

Project details

Update the following under `.github/main.yml`:

```
PROJECT:
APP_PUBLISHER:
```

Python version

Set your Python version under `.github/main.yml`:

```
python-version: '3.7'
architecture: 'x64'
```


14.1 Issue: dll not found

Solution:

- 1) `xlwings32-<version>.dll` and `xlwings64-<version>.dll` are both in the same directory as your `python.exe`. If not, something went wrong with your installation. Reinstall it with `pip` or `conda`, see *Installation*.
- 2) Check your Interpreter in the add-in or config sheet. If it is empty, then you need to be able to open a windows command prompt and type `python` to start an interactive Python session. If you get the error 'python' is not recognized as an internal or external command, operable program or batch file., then you have two options: Either add the path of where your `python.exe` lives to your Windows path (see <https://www.computerhope.com/issues/ch000549.htm>) or set the full path to your interpreter in the add-in or your config sheet, e.g. `C:\Users\MyUser\anaconda\pythonw.exe`

CHAPTER 15

xlwings PRO

The purpose of xlwings PRO is to finance the continued maintenance and enhancement of xlwings. This will allow you to rely on the package without being left with the dreaded “[this library currently has no active maintainers](#)” message that happens to too many open-source packages after a couple of years.

xlwings PRO offers access to additional functionality. All PRO features are marked with xlwings *PRO* in the docs.

Note: To get access to the additional functionality of xlwings PRO, you need a license key and at least xlwings v0.19.0. Everything under the `xlwings.pro` subpackage is distributed under a commercial license.

15.1 PRO Features

- *Embedded Code*: Store your Python source code directly in Excel for easy deployment.
- *One-Click Zero-Config Installer*: Guarantees that the end user does not need to know anything about Python.
- *xlwings Reports*: A template based reporting mechanism, allows business users to change the layout of the report without having to change Python code.
- Access to [video training](#)
- Dedicated support

15.2 More Infos

- Pricing: <https://www.xlwings.org/pricing>
- Trial license key: <https://www.xlwings.org/trial>

Converters and Options

Introduced with v0.7.0, converters define how Excel ranges and their values are converted both during **reading** and **writing** operations. They also provide a consistent experience across **xlwings.Range** objects and **User Defined Functions** (UDFs).

Converters are explicitly set in the `options` method when manipulating `Range` objects or in the `@xw.arg` and `@xw.ret` decorators when using UDFs. If no converter is specified, the default converter is applied when reading. When writing, xlwings will automatically apply the correct converter (if available) according to the object's type that is being written to Excel. If no converter is found for that type, it falls back to the default converter.

All code samples below depend on the following import:

```
>>> import xlwings as xw
```

Syntax:

	xw.Range	UDFs
read- ing	<code>xw.Range.options(convert=None, **kwargs).value</code>	<code>@arg('x', convert=None, **kwargs)</code>
writ- ing	<code>xw.Range.options(convert=None, **kwargs).value = myvalue</code>	<code>@ret(convert=None, **kwargs)</code>

Note: Keyword arguments (`kwargs`) may refer to the specific converter or the default converter. For example, to set the `numbers` option in the default converter and the `index` option in the `DataFrame` converter, you would write:

```
xw.Range('A1:C3').options(pd.DataFrame, index=False, numbers=int).value
```

16.1 Default Converter

If no options are set, the following conversions are performed:

- single cells are read in as `floats` in case the Excel cell holds a number, as `unicode` in case it holds text, as `datetime` if it contains a date and as `None` in case it is empty.
- columns/rows are read in as lists, e.g. `[None, 1.0, 'a string']`
- 2d cell ranges are read in as list of lists, e.g. `[[None, 1.0, 'a string'], [None, 2.0, 'another string']]`

The following options can be set:

- **ndim**

Force the value to have either 1 or 2 dimensions regardless of the shape of the range:

```
>>> import xlwings as xw
>>> sht = xw.Book().sheets[0]
>>> sht.range('A1').value = [[1, 2], [3, 4]]
>>> sht.range('A1').value
1.0
>>> sht.range('A1').options(ndim=1).value
[1.0]
>>> sht.range('A1').options(ndim=2).value
[[1.0]]
>>> sht.range('A1:A2').value
[1.0 3.0]
>>> sht.range('A1:A2').options(ndim=2).value
[[1.0], [3.0]]
```

- **numbers**

By default cells with numbers are read as `float`, but you can change it to `int`:

```
>>> sht.range('A1').value = 1
>>> sht.range('A1').value
1.0
>>> sht.range('A1').options(numbers=int).value
1
```

Alternatively, you can specify any other function or type which takes a single float argument.

Using this on UDFs looks like this:

```
@xw.func
@xw.arg('x', numbers=int)
def myfunction(x):
```

(continues on next page)

(continued from previous page)

```
# all numbers in x arrive as int
return x
```

Note: Excel always stores numbers internally as floats, which is the reason why the *int* converter rounds numbers first before turning them into integers. Otherwise it could happen that e.g. 5 might be returned as 4 in case it is represented as a floating point number that is slightly smaller than 5. Should you require Python's original *int* in your converter, use *raw int* instead.

- **dates**

By default cells with dates are read as `datetime.datetime`, but you can change it to `datetime.date`:

- Range:

```
>>> import datetime as dt
>>> sht.range('A1').options(dates=dt.date).value
```

- UDFs: `@xw.arg('x', dates=dt.date)`

Alternatively, you can specify any other function or type which takes the same keyword arguments as `datetime.datetime`, for example:

```
>>> my_date_handler = lambda year, month, day, **kwargs: "%04i-%02i-%02i" % (year, month, day)
>>> sht.range('A1').options(dates=my_date_handler).value
'2017-02-20'
```

- **empty**

Empty cells are converted per default into `None`, you can change this as follows:

- Range: `>>> sht.range('A1').options(empty='NA').value`
- UDFs: `@xw.arg('x', empty='NA')`

- **transpose**

This works for reading and writing and allows us to e.g. write a list in column orientation to Excel:

- Range: `sht.range('A1').options(transpose=True).value = [1, 2, 3]`
- UDFs:

```
@xw.arg('x', transpose=True)
@xw.ret(transpose=True)
def myfunction(x):
    # x will be returned unchanged as transposed both when reading
    ↪and writing
    return x
```

- **expand**

This works the same as the Range properties table, vertical and horizontal but is only evaluated when getting the values of a Range:

```
>>> import xlwings as xw
>>> sht = xw.Book().sheets[0]
>>> sht.range('A1').value = [[1,2], [3,4]]
>>> rng1 = sht.range('A1').expand()
>>> rng2 = sht.range('A1').options(expand='table')
>>> rng1.value
[[1.0, 2.0], [3.0, 4.0]]
>>> rng2.value
[[1.0, 2.0], [3.0, 4.0]]
>>> sht.range('A3').value = [5, 6]
>>> rng1.value
[[1.0, 2.0], [3.0, 4.0]]
>>> rng2.value
[[1.0, 2.0], [3.0, 4.0], [5.0, 6.0]]
```

Note: The `expand` method is only available on `Range` objects as UDFs only allow to manipulate the calling cells.

16.2 Built-in Converters

xlwings offers several built-in converters that perform type conversion to **dictionaries**, **NumPy arrays**, **Pandas Series** and **DataFrames**. These build on top of the default converter, so in most cases the options described above can be used in this context, too (unless they are meaningless, for example the `ndim` in the case of a dictionary).

It is also possible to write and register custom converter for additional types, see below.

The samples below can be used with both `xlwings.Range` objects and UDFs even though only one version may be shown.

16.2.1 Dictionary converter

The dictionary converter turns two Excel columns into a dictionary. If the data is in row orientation, use `transpose`:

	A	B
1	a	1
2	b	2
3		
4	a	b
5	1	2

```
>>> sht = xw.sheets.active
>>> sht.range('A1:B2').options(dict).value
{'a': 1.0, 'b': 2.0}
```

(continues on next page)

(continued from previous page)

```
>>> sht.range('A4:B5').options(dict, transpose=True).value
{'a': 1.0, 'b': 2.0}
```

Note: instead of `dict`, you can also use `OrderedDict` from `collections`.

16.2.2 Numpy array converter

options: `dtype=None`, `copy=True`, `order=None`, `ndim=None`

The first 3 options behave the same as when using `np.array()` directly. Also, `ndim` works the same as shown above for lists (under default converter) and hence returns either numpy scalars, 1d arrays or 2d arrays.

Example:

```
>>> import numpy as np
>>> sht = xw.Book().sheets[0]
>>> sht.range('A1').options(transpose=True).value = np.array([1, 2, 3])
>>> sht.range('A1:A3').options(np.array, ndim=2).value
array([[ 1.],
        [ 2.],
        [ 3.]])
```

16.2.3 Pandas Series converter

options: `dtype=None`, `copy=False`, `index=1`, `header=True`

The first 2 options behave the same as when using `pd.Series()` directly. `ndim` doesn't have an effect on Pandas series as they are always expected and returned in column orientation.

index: int or Boolean

When reading, it expects the number of index columns shown in Excel.

When writing, include or exclude the index by setting it to `True` or `False`.

header: Boolean

When reading, set it to `False` if Excel doesn't show either index or series names.

When writing, include or exclude the index and series names by setting it to `True` or `False`.

For `index` and `header`, `1` and `True` may be used interchangeably.

Example:

```
>>> sht = xw.Book().sheets[0]
>>> s = sht.range('A1').options(pd.Series, expand='table').value
>>> s
date
2001-01-01    1
2001-01-02    2
```

(continues on next page)

	A	B	C	D	E
1	date	series name		01/01/01	1
2	01/01/01	1		02/01/01	2
3	02/01/01	2		03/01/01	3
4	03/01/01	3		04/01/01	4
5	04/01/01	4		05/01/01	5
6	05/01/01	5		06/01/01	6
7	06/01/01	6			

(continued from previous page)

```

2001-01-03    3
2001-01-04    4
2001-01-05    5
2001-01-06    6
Name: series name, dtype: float64
>>> sht.range('D1', header=False).value = s

```

16.2.4 Pandas DataFrame converter

options: dtype=None, copy=False, index=1, header=1

The first 2 options behave the same as when using `pd.DataFrame()` directly. `ndim` doesn't have an effect on Pandas DataFrames as they are automatically read in with `ndim=2`.

index: int or Boolean

When reading, it expects the number of index columns shown in Excel.

When writing, include or exclude the index by setting it to `True` or `False`.

header: int or Boolean

When reading, it expects the number of column headers shown in Excel.

When writing, include or exclude the index and series names by setting it to `True` or `False`.

For `index` and `header`, 1 and `True` may be used interchangeably.

Example:

```

>>> sht = xw.Book().sheets[0]
>>> df = sht.range('A1:D5').options(pd.DataFrame, header=2).value
>>> df
   a  b
   c d e
ix
10  1  2  3
20  4  5  6
30  7  8  9

# Writing back using the defaults:
>>> sht.range('A1').value = df

```

(continues on next page)

	A	B	C	D
1		a	a	b
2	ix	c	d	e
3	10	1	2	3
4	20	4	5	6
5	30	7	8	9
6				
7		a	a	b
8		c	d	e
9		1	2	3
10		4	5	6
11		7	8	9
12				
13		a	a	b
14		c	d	e
15		1	2	3
16		4	5	6
17		7	8	9
18				

(continued from previous page)

```
# Writing back and changing some of the options, e.g. getting rid of the
↪ index:
>>> sht.range('B7').options(index=False).value = df
```

The same sample for **UDF** (starting in Range ('A13 ') on screenshot) looks like this:

```
@xw.func
@xw.arg('x', pd.DataFrame, header=2)
@xw.ret(index=False)
def myfunction(x):
    # x is a DataFrame, do something with it
    return x
```

16.2.5 xw.Range and 'raw' converters

Technically speaking, these are “no-converters”.

- If you need access to the `xlwings.Range` object directly, you can do:

```
@xw.func
@xw.arg('x', xw.Range)
def myfunction(x):
    return x.formula
```

This returns `x` as `xlwings.Range` object, i.e. without applying any converters or options.

- The `raw` converter delivers the values unchanged from the underlying libraries (pywin32 on Windows and appscript on Mac), i.e. no sanitizing/cross-platform harmonizing of values are being made. This might be useful in a few cases for efficiency reasons. E.g:

```
>>> sht.range('A1:B2').value
[[1.0, 'text'], [datetime.datetime(2016, 2, 1, 0, 0), None]]

>>> sht.range('A1:B2').options('raw').value # or sht.range('A1:B2').raw_
↪value
((1.0, 'text'), (pywintypes.datetime(2016, 2, 1, 0, 0,
↪tzinfo=TimeZoneInfo('GMT Standard Time', True)), None))
```

16.3 Custom Converter

Here are the steps to implement your own converter:

- Inherit from `xlwings.conversion.Converter`
- Implement both a `read_value` and `write_value` method as static- or classmethod:
 - In `read_value`, `value` is what the base converter returns: hence, if no base has been specified it arrives in the format of the default converter.
 - In `write_value`, `value` is the original object being written to Excel. It must be returned in the format that the base converter expects. Again, if no base has been specified, this is the default converter.

The `options` dictionary will contain all keyword arguments specified in the `xw.Range.options` method, e.g. when calling `xw.Range('A1').options(myoption='some value')` or as specified in the `@arg` and `@ret` decorator when using UDFs. Here is the basic structure:

```
from xlwings.conversion import Converter

class MyConverter(Converter):

    @staticmethod
    def read_value(value, options):
        myoption = options.get('myoption', default_value)
        return_value = value # Implement your conversion here
        return return_value

    @staticmethod
    def write_value(value, options):
        myoption = options.get('myoption', default_value)
        return_value = value # Implement your conversion here
        return return_value
```

- Optional: set a base converter (base expects a class name) to build on top of an existing converter, e.g. for the built-in ones: `DictConverter`, `NumpyArrayConverter`, `PandasDataFrameConverter`, `PandasSeriesConverter`
- Optional: register the converter: you can **(a)** register a type so that your converter becomes the default for this type during write operations and/or **(b)** you can register an alias that will allow you to explicitly call your converter by name instead of just by class name

The following examples should make it much easier to follow - it defines a DataFrame converter that extends the built-in DataFrame converter to add support for dropping nan's:

```
from xlwings.conversion import Converter, PandasDataFrameConverter

class DataFrameDropna(Converter):

    base = PandasDataFrameConverter

    @staticmethod
    def read_value(builtin_df, options):
        dropna = options.get('dropna', False) # set default to False
        if dropna:
            converted_df = builtin_df.dropna()
        else:
            converted_df = builtin_df
        # This will arrive in Python when using the DataFrameDropna converter_
        ↪for reading
        return converted_df

    @staticmethod
    def write_value(df, options):
        dropna = options.get('dropna', False)
        if dropna:
            converted_df = df.dropna()
        else:
            converted_df = df
        # This will be passed to the built-in PandasDataFrameConverter when_
        ↪writing
        return converted_df
```

Now let's see how the different converters can be applied:

```
# Fire up a Workbook and create a sample DataFrame
sht = xw.Book().sheets[0]
df = pd.DataFrame([[1., 10.], [2., np.nan], [3., 30.]])
```

- Default converter for DataFrames:

```
# Write
sht.range('A1').value = df

# Read
sht.range('A1:C4').options(pd.DataFrame).value
```

- DataFrameDropna converter:

```
# Write
sht.range('A7').options(DataFrameDropna, dropna=True).value = df

# Read
sht.range('A1:C4').options(DataFrameDropna, dropna=True).value
```

- Register an alias (optional):

```
DataFrameDropna.register('df_dropna')

# Write
sht.range('A12').options('df_dropna', dropna=True).value = df

# Read
sht.range('A1:C4').options('df_dropna', dropna=True).value
```

- Register DataFrameDropna as default converter for DataFrames (optional):

```
DataFrameDropna.register(pd.DataFrame)

# Write
sht.range('A13').options(dropna=True).value = df

# Read
sht.range('A1:C4').options(pd.DataFrame, dropna=True).value
```

These samples all work the same with UDFs, e.g.:

```
@xw.func
@arg('x', DataFrameDropna, dropna=True)
@ret(DataFrameDropna, dropna=True)
def myfunction(x):
    # ...
    return x
```

Note: Python objects run through multiple stages of a transformation pipeline when they are being written to Excel. The same holds true in the other direction, when Excel/COM objects are being read into Python.

Pipelines are internally defined by `Accessor` classes. A `Converter` is just a special `Accessor` which converts to/from a particular type by adding an extra stage to the pipeline of the default `Accessor`. For example, the `PandasDataFrameConverter` defines how a list of list (as delivered by the default `Accessor`) should be turned into a Pandas `DataFrame`.

The `Converter` class provides basic scaffolding to make the task of writing a new `Converter` easier. If you need more control you can subclass `Accessor` directly, but this part requires more work and is currently undocumented.

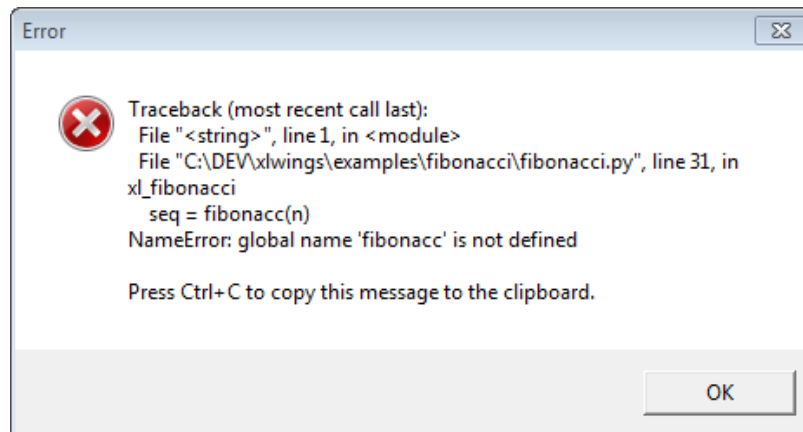
CHAPTER 17

Debugging

Since xlwings runs in every Python environment, you can use your preferred way of debugging.

- **RunPython:** When calling Python through `RunPython`, you can set a `mock_caller` to make it easy to switch back and forth between calling the function from Excel and Python.
- **UDFs:** For debugging User Defined Functions, xlwings offers a convenient debugging server

To begin with, Excel will show Python errors in a Message Box:



Note: On Mac, if the `import` of a module/package fails before `xlwings` is imported, the popup will not be shown and the StatusBar will not be reset. However, the error will still be logged in the log file (`/Users/<User>/Library/Containers/com.microsoft.Excel/Data/xlwings.log`).

17.1 RunPython

Consider the following sample code of your Python source code `my_module.py`:

```
# my_module.py
import os
import xlwings as xw

def my_macro():
    wb = xw.Book.caller()
    wb.sheets[0].range('A1').value = 1

if __name__ == '__main__':
    # Expects the Excel file next to this source file, adjust accordingly.
    xw.Book('myfile.xlsm').set_mock_caller()
    my_macro()
```

`my_macro()` can now easily be run from Python for debugging and from Excel via `RunPython` without having to change the source code:

```
Sub my_macro()
    RunPython ("import my_module; my_module.my_macro()")
End Sub
```

17.2 UDF debug server

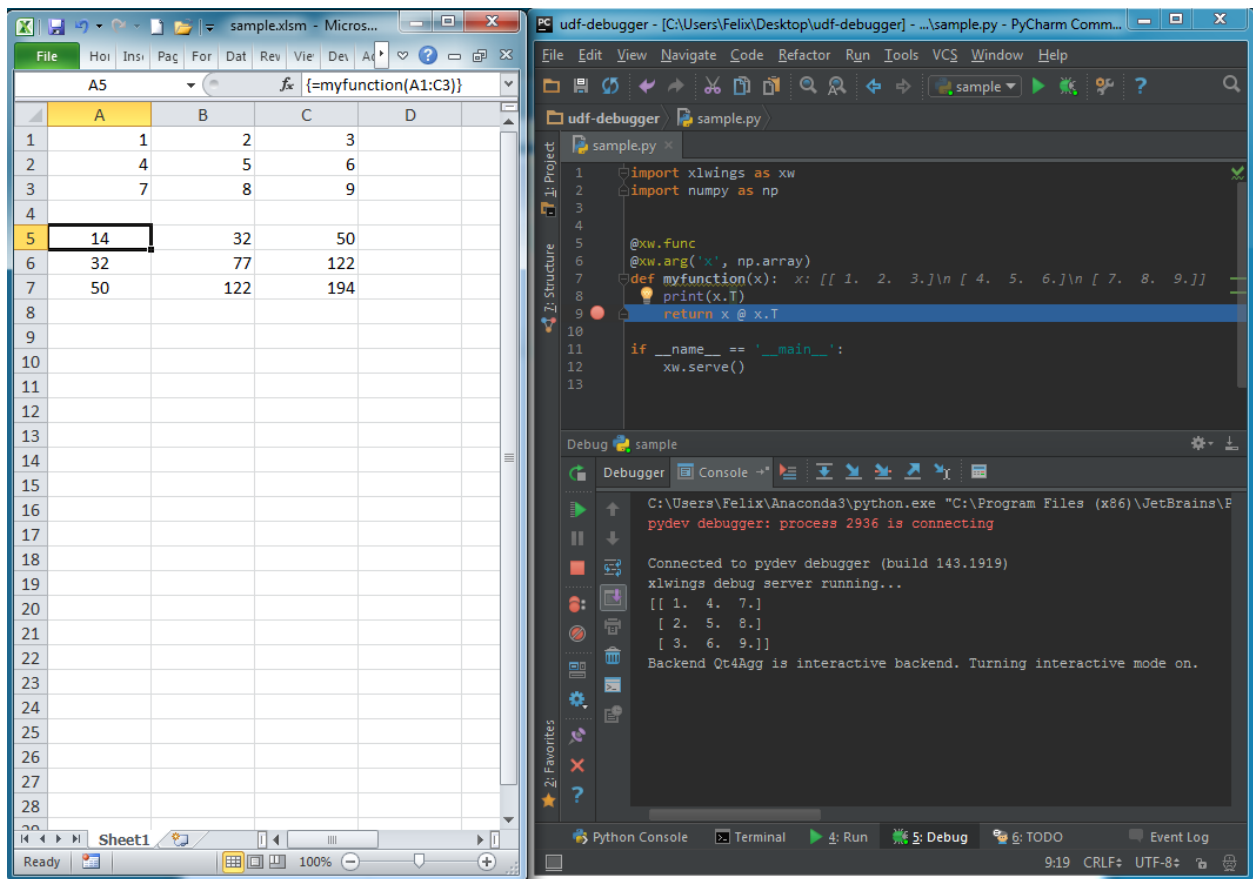
Windows only: To debug UDFs, just check the Debug UDFs in the *Add-in & Settings*, at the top of the xlwings VBA module. Then add the following lines at the end of your Python source file and run it. Depending on which IDE you use, you might need to run the code in “debug” mode (e.g. in case you’re using PyCharm or PyDev):

```
if __name__ == '__main__':
    xw.serve()
```

When you recalculate the Sheet (Ctrl-Alt-F9), the code will stop at breakpoints or output any print calls that you may have.

The following screenshot shows the code stopped at a breakpoint in the community version of PyCharm:

Note: When running the debug server from a command prompt, there is currently no gracious way to terminate it, but closing the command prompt will kill it.



CHAPTER 18

Extensions

It's easy to extend the xlwings add-in with own code like UDFs or RunPython macros, so that they can be deployed without end users having to import or write the functions themselves. Just add another VBA module to the xlwings addin with the respective code.

UDF extensions can be used from every workbook without having to set a reference.

18.1 In-Excel SQL

The xlwings addin comes with a built-in extension that adds in-Excel SQL syntax (sqlite dialect):

```
=sql(SQL Statement, table a, table b, ...)
```

The screenshot shows an Excel spreadsheet with a formula bar at the top displaying `=sql(A14,A1:D11,G1:H8)`. The spreadsheet contains two tables. The first table, located in the range A1:D11, has columns for id, first_name, last_name, and age. The second table, located in the range G1:H8, has columns for id and email. Below these tables, in row 14, is an SQL query: `SELECT a.id, a.first_name, a.last_name, b.email FROM a INNER JOIN b ON a.id = b.id`. The result of this query is displayed in the range A16:E14, showing the first_name, last_name, and email for each person, joined together.

	A	B	C	D	E	F	G	H
1	id	first_name	last_name	age			id	email
2	1	Mariam	Alt	12			1	Mariam@Alt
3	2	Shenita	Truelove	55			2	Shenita@Truelove
4	3	Evelyn	Braddy	30			3	Evelyn@Braddy
5	4	Shery	Sam	35			5	Rogello@Mote
6	5	Rogello	Mote	88			6	Solomon@Okamura
7	6	Solomon	Okamura	33			8	Latashia@Alire
8	7	Jessica	Buelow	10			9	Roselee@Tarwater
9	8	Latashia	Alire	19				
10	9	Roselee	Tarwater	28				
11	10	Kiera	Saulsbury	55				
12								
13								
14	SELECT a.id, a.first_name, a.last_name, b.email FROM a INNER JOIN b ON a.id = b.id							
15								
16	id	first_name	last_name	email				
17	1	Mariam	Alt	Mariam@Alt				
18	2	Shenita	Truelove	Shenita@Truelove				
19	3	Evelyn	Braddy	Evelyn@Braddy				
20	5	Rogello	Mote	Rogello@Mote				
21	6	Solomon	Okamura	Solomon@Okamura				
22	8	Latashia	Alire	Latashia@Alire				
23	9	Roselee	Tarwater	Roselee@Tarwater				

As this extension uses UDFs, it's only available on Windows right now.

Threading and Multiprocessing

New in version 0.13.0.

19.1 Threading

While xlwings is not technically thread safe, it's still easy to use it in threads as long as you have at least v0.13.0 and stick to a simple rule: Do not pass xlwings objects to threads. This rule isn't a requirement on macOS, but it's still recommended if you want your programs to be cross-platform.

Consider the following example that will **NOT** work:

```
import threading
from queue import Queue
import xlwings as xw

num_threads = 4

def write_to_workbook():
    while True:
        rng = q.get()
        rng.value = rng.address
        print(rng.address)
        q.task_done()

q = Queue()

for i in range(num_threads):
    t = threading.Thread(target=write_to_workbook)
```

(continues on next page)

(continued from previous page)

```
t.daemon = True
t.start()

for cell in ['A1', 'A2', 'A3', 'A4', 'A5', 'A6', 'A7', 'A8', 'A9', 'A10']:
    # THIS DOESN'T WORK - passing xlwings objects to threads will fail!
    rng = xw.Book('Book1.xlsx').sheets[0].range(cell)
    q.put(rng)

q.join()
```

To make it work, you simply have to fully qualify the cell reference in the thread instead of passing a Book object:

```
import threading
from queue import Queue
import xlwings as xw

num_threads = 4

def write_to_workbook():
    while True:
        cell_ = q.get()
        xw.Book('Book1.xlsx').sheets[0].range(cell_).value = cell_
        print(cell_)
        q.task_done()

q = Queue()

for i in range(num_threads):
    t = threading.Thread(target=write_to_workbook)
    t.daemon = True
    t.start()

for cell in ['A1', 'A2', 'A3', 'A4', 'A5', 'A6', 'A7', 'A8', 'A9', 'A10']:
    q.put(cell)

q.join()
```

19.2 Multiprocessing

Note: Multiprocessing is only support on Windows!

The same rules apply to multiprocessing as for threading, here's a working example:

```
from multiprocessing import Pool
import xlwings as xw

def write_to_workbook(cell):
    xw.Book('Book1.xlsx').sheets[0].range(cell).value = cell
    print(cell)

if __name__ == '__main__':
    with Pool(4) as p:
        p.map(write_to_workbook,
              ['A1', 'A2', 'A3', 'A4', 'A5', 'A6', 'A7', 'A8', 'A9', 'A10'])
```


CHAPTER 20

Missing Features

If you're missing a feature in `xlwings`, do the following:

- 1) Most importantly, open an issue on [GitHub](#). If it's something bigger or if you want support from other users, consider opening a [feature request](#). Adding functionality should be user driven, so only if you tell us about what you're missing, it's eventually going to find its way into the library. By the way, we also appreciate pull requests!
- 2) Workaround: in essence, `xlwings` is just a smart wrapper around `pywin32` on Windows and `appscript` on Mac. You can access the underlying objects by calling the `api` property:

```
>>> sht = xw.Book().sheets[0]
>>> sht.api
<COMObject <unknown>> # Windows/pywin32
app(pid=2319).workbooks['Workbook1'].worksheets[1] # Mac/appscript
```

This works accordingly for the other objects like `sht.range('A1').api` etc.

The underlying objects will offer you pretty much everything you can do with VBA, using the syntax of `pywin32` (which pretty much feels like VBA) and `appscript` (which doesn't feel like VBA). But apart from looking ugly, keep in mind that **it makes your code platform specific (!)**, i.e. even if you go for option 2), you should still follow option 1) and open an issue so the feature finds its way into the library (cross-platform and with a Pythonic syntax).

20.1 Example: Workaround to use VBA's `Range.WrapText`

```
# Windows
sht.range('A1').api.WrapText = True
```

(continues on next page)

(continued from previous page)

```
# Mac  
sht.range('A1').api.wrap_text.set(True)
```

CHAPTER 21

xlwings with other Office Apps

xlwings can also be used to call Python functions from VBA within Office apps other than Excel (like Outlook, Access etc.).

Note: New in v0.12.0 and still in a somewhat early stage that involves a bit of manual work. Currently, this functionality is only available on Windows for UDFs. The `RunPython` functionality is currently not supported.

21.1 How To

- 1) As usual, write your Python function and import it into Excel (see *User Defined Functions (UDFs)*).
- 2) Press `Alt-F11` to get into the VBA editor, then right-click on the `xlwings_udfs` VBA module and select `Export File...` Save the `xlwings_udfs.bas` file somewhere.
- 3) Switch into the other Office app, e.g. Microsoft Access and click again `Alt-F11` to get into the VBA editor. Right-click on the VBA Project and `Import File...`, then select the file that you exported in the previous step. Once imported, replace the app name in the first line to the one that you are using, i.e. `Microsoft Access` or `Microsoft Outlook` etc. so that the first line then reads: `#Const App = "Microsoft Access"`
- 4) Now import the standalone xlwings VBA module (`xlwings.bas`). You can find it in your xlwings installation folder. To know where that is, do:

```
>>> import xlwings as xw
>>> xlwings.__path__
```

And finally do the same as in the previous step and replace the App name in the first line with the name of the corresponding app that you are using. You are now able to call the Python function from VBA.

21.2 Config

The other Office apps will use the same global config file as you are editing via the Excel ribbon add-in. When it makes sense, you'll be able to use the directory config file (e.g. you can put it next to your Access or Word file) or you can hardcode the path to the config file in the VBA standalone module, e.g. in the function `GetDirectoryConfigFilePath` (e.g. suggested when using Outlook that doesn't really have the same concept of files like the other Office apps). NOTE: For Office apps without file concept, you need to make sure that the `PYTHONPATH` points to the directory with the Python source file. For details on the different config options, see [Config](#).

While xlwings is a pure Python package, there are cross-language packages that allow for a relative straightforward use from/with other languages. This means, however, that you'll always need to have Python with xlwings installed in addition to R or Julia. We recommend the [Anaconda](#) distribution, see also [Installation](#).

22.1 R

The R instructions are for Windows, but things work accordingly on Mac except that calling the R functions as User Defined Functions is not supported at the moment (but `RunPython` works, see [Call Python with "RunPython"](#)).

Setup:

- Install R and Python
- Add `R_HOME` environment variable to base directory of installation, .e.g `C:\Program Files\R\R-x.x.x`
- Add `R_USER` environment variable to user folder, e.g. `C:\Users\<user>`
- Add `C:\Program Files\R\R-x.x.x\bin` to `PATH`
- Restart Windows because of the environment variables (!)

22.1.1 Simple functions with R

Original R function that we want to access from Excel (saved in `r_file.R`):

```
myfunction <- function(x, y){  
  return(x * y)  
}
```

Python wrapper code:

```
import xlwings as xw  
import rpy2.robj as robjects  
# you might want to use some relative path or place the file in R's current_  
# working dir  
robjects.r.source(r"C:\path\to\r_file.R")  
  
@xw.func  
def myfunction(x, y):  
    myfunc = robjects.r['myfunction']  
    return tuple(myfunc(x, y))
```

After importing this function (see: *User Defined Functions (UDFs)*), it will be available as UDF from Excel.

22.1.2 Array functions with R

Original R function that we want to access from Excel (saved in `r_file.R`):

```
array_function <- function(m1, m2){  
  # Matrix multiplication  
  return(m1 %*% m2)  
}
```

Python wrapper code:

```
import xlwings as xw  
import numpy as np  
import rpy2.robj as robjects  
from rpy2.robj import numpy2ri  
  
robjects.r.source(r"C:\path\to\r_file.R")  
numpy2ri.activate()  
  
@xw.func  
@xw.arg("x", np.array, ndim=2)  
@xw.arg("y", np.array, ndim=2)  
def array_function(x, y):  
    array_func = robjects.r['array_function']  
    return np.array(array_func(x, y))
```

After importing this function (see: *User Defined Functions (UDFs)*), it will be available as UDF from Excel.

22.2 Julia

Setup:

- Install Julia and Python
- Run `Pkg.add("PyCall")` from an interactive Julia interpreter

xlwings can then be called from Julia with the following syntax (the colons take care of automatic type conversion):

```
julia> using PyCall
julia> @pyimport xlwings as xw

julia> xw.Book()
PyObject <Book [Workbook1]>

julia> xw.Range("A1")[:value] = "Hello World"
julia> xw.Range("A1")[:value]
"Hello World"
```


23.1 Top-level functions

`xlwings.view(obj, sheet=None)`

Opens a new workbook and displays an object on its first sheet by default. If you provide a sheet object, it will clear the sheet before displaying the object on the existing sheet.

Parameters

- **obj** (*any type with built-in converter*) – the object to display, e.g. numbers, strings, lists, numpy arrays, pandas dataframes
- **sheet** (*Sheet, default None*) – Sheet object. If none provided, the first sheet of a new workbook is used.

Examples

```
>>> import xlwings as xw
>>> import pandas as pd
>>> import numpy as np
>>> df = pd.DataFrame(np.random.rand(10, 4), columns=['a', 'b', 'c', 'd
↪'])
>>> xw.view(df)
```

New in version 0.7.1.

23.2 Object model

23.2.1 Apps

class `xlwings.main.Apps` (*impl*)

A collection of all app objects:

```
>>> import xlwings as xw
>>> xw.apps
Apps([<Excel App 1668>, <Excel App 1644>])
```

active

Returns the active app.

New in version 0.9.0.

add()

Creates a new App. The new App becomes the active one. Returns an App object.

count

Returns the number of apps.

New in version 0.9.0.

keys()

Provides the PIDs of the Excel instances that act as keys in the Apps collection.

New in version 0.13.0.

23.2.2 App

class `xlwings.App` (*visible=None, spec=None, add_book=True, impl=None*)

An app corresponds to an Excel instance. New Excel instances can be fired up like so:

```
>>> import xlwings as xw
>>> app1 = xw.App()
>>> app2 = xw.App()
```

An app object is a member of the `apps` collection:

```
>>> xw.apps
Apps([<Excel App 1668>, <Excel App 1644>])
>>> xw.apps[1668] # get the available PIDs via xw.apps.keys()
<Excel App 1668>
>>> xw.apps.active
<Excel App 1668>
```

Parameters

- **visible** (*bool, default None*) – Returns or sets a boolean value that determines whether the app is visible. The default leaves the state unchanged or sets `visible=True` if the object doesn't exist yet.

- **spec**(*str*, *default None*) – Mac-only, use the full path to the Excel application, e.g. `/Applications/Microsoft Office 2011/Microsoft Excel` or `/Applications/Microsoft Excel`

On Windows, if you want to change the version of Excel that xlwings talks to, go to Control Panel > Programs and Features and Repair the Office version that you want as default.

Note: On Mac, while xlwings allows you to run multiple instances of Excel, it's a feature that is not officially supported by Excel for Mac: Unlike on Windows, Excel will not ask you to open a read-only version of a file if it is already open in another instance. This means that you need to watch out yourself so that the same file is not being overwritten from different instances.

activate(*steal_focus=False*)

Activates the Excel app.

Parameters **steal_focus** (*bool*, *default False*) – If True, make front-most application and hand over focus from Python to Excel.

New in version 0.9.0.

api

Returns the native object (pywin32 or appscript obj) of the engine being used.

New in version 0.9.0.

books

A collection of all Book objects that are currently open.

New in version 0.9.0.

calculate()

Calculates all open books.

New in version 0.3.6.

calculation

Returns or sets a calculation value that represents the calculation mode. Modes: 'manual', 'automatic', 'semiautomatic'

Examples

```
>>> import xlwings as xw
>>> wb = xw.Book()
>>> wb.app.calculation = 'manual'
```

Changed in version 0.9.0.

display_alerts

The default value is True. Set this property to False to suppress prompts and alert messages while code is running; when a message requires a response, Excel chooses the default response.

New in version 0.9.0.

hwnd

Returns the Window handle (Windows-only).

New in version 0.9.0.

kill()

Forces the Excel app to quit by killing its process.

New in version 0.9.0.

macro(name)

Runs a Sub or Function in Excel VBA that are not part of a specific workbook but e.g. are part of an add-in.

Parameters **name** (Name of Sub or Function with or without module name, e.g. 'Module1.MyMacro' or 'MyMacro') –

Examples

This VBA function:

```
Function MySum(x, y)
    MySum = x + y
End Function
```

can be accessed like this:

```
>>> import xlwings as xw
>>> app = xw.App()
>>> my_sum = app.macro('MySum')
>>> my_sum(1, 2)
3
```

See also: `Book.macro()`

New in version 0.9.0.

pid

Returns the PID of the app.

New in version 0.9.0.

quit()

Quits the application without saving any workbooks.

New in version 0.3.3.

range(cell1, cell2=None)

Range object from the active sheet of the active book, see `Range()`.

New in version 0.9.0.

screen_updating

Turn screen updating off to speed up your script. You won't be able to see what the script is doing, but it will run faster. Remember to set the `screen_updating` property back to `True` when your script ends.

New in version 0.3.3.

selection

Returns the selected cells as `Range`.

New in version 0.9.0.

version

Returns the Excel version number object.

Examples

```
>>> import xlwings as xw
>>> xw.App().version
VersionNumber('15.24')
>>> xw.apps[10559].version.major
15
```

Changed in version 0.9.0.

visible

Gets or sets the visibility of Excel to `True` or `False`.

New in version 0.3.3.

23.2.3 Books

class `xlwings.main.Books` (*impl*)

A collection of all book objects:

```
>>> import xlwings as xw
>>> xw.books # active app
Books([<Book [Book1]>, <Book [Book2]>])
>>> xw.apps[10559].books # specific app, get the PIDs via xw.apps.keys()
Books([<Book [Book1]>, <Book [Book2]>])
```

New in version 0.9.0.

active

Returns the active Book.

add()

Creates a new Book. The new Book becomes the active Book. Returns a Book object.

open (*fullname*, *update_links=None*, *read_only=None*, *format=None*, *password=None*, *write_res_password=None*, *ignore_read_only_recommended=None*, *origin=None*, *delimiter=None*, *editable=None*, *notify=None*, *converter=None*, *add_to_mru=None*, *local=None*, *corrupt_load=None*)

Opens a Book if it is not open yet and returns it. If it is already open, it doesn't raise an exception but simply returns the Book object.

Parameters

- **fullname** (*str* or *path-like object*) – filename or fully qualified filename, e.g. `r'C:\path\to\file.xlsx'` or `'file.xlsm'`. Without a full path, it looks for the file in the current working directory.
- **Parameters** (*Other*) – see: `xlwings.Book()`

Returns Book

Return type Book that has been opened.

23.2.4 Book

class `xlwings.Book` (*fullname=None*, *update_links=None*, *read_only=None*, *format=None*, *password=None*, *write_res_password=None*, *ignore_read_only_recommended=None*, *origin=None*, *delimiter=None*, *editable=None*, *notify=None*, *converter=None*, *add_to_mru=None*, *local=None*, *corrupt_load=None*, *impl=None*)

A book object is a member of the `books` collection:

```
>>> import xlwings as xw
>>> xw.books[0]
<Book [Book1]>
```

The easiest way to connect to a book is offered by `xw.Book`: it looks for the book in all app instances and returns an error, should the same book be open in multiple instances. To connect to a book in the active app instance, use `xw.books` and to refer to a specific app, use:

```
>>> app = xw.App() # or something like xw.apps[10559] for existing apps,
↪ get the PIDs via xw.apps.keys()
>>> app.books['Book1']
```

	<code>xw.Book</code>	<code>xw.books</code>
New book	<code>xw.Book()</code>	<code>xw.books.add()</code>
Unsaved book	<code>xw.Book('Book1')</code>	<code>xw.books['Book1']</code>
Book by (fullname)	<code>xw.Book(r'C:/path/to/file.xlsx')</code>	<code>xw.books.open(r'C:/path/to/file.xlsx')</code>

Parameters

- **fullname** (*str* or *path-like object*, *default None*) – Full path or name (incl. `xlsx`, `xlsm` etc.) of existing workbook or name of an unsaved workbook. Without a full path, it looks for the file in the current working directory.

- **update_links** (*bool*, *default None*) – If this argument is omitted, the user is prompted to specify how links will be updated
- **read_only** (*bool*, *default False*) – True to open workbook in read-only mode
- **format** (*str*) – If opening a text file, this specifies the delimiter character
- **password** (*str*) – Password to open a protected workbook
- **write_res_password** (*str*) – Password to write to a write-reserved workbook
- **ignore_read_only_recommended** (*bool*, *default False*) – Set to True to mute the read-only recommended message
- **origin** (*int*) – For text files only. Specifies where it originated. Use XIPlatform constants.
- **delimiter** (*str*) – If format argument is 6, this specifies the delimiter.
- **editable** (*bool*, *default False*) – This option is only for legacy Microsoft Excel 4.0 addins.
- **notify** (*bool*, *default False*) – Notify the user when a file becomes available If the file cannot be opened in read/write mode.
- **converter** (*int*) – The index of the first file converter to try when opening the file.
- **add_to_mru** (*bool*, *default False*) – Add this workbook to the list of recently added workbooks.
- **local** (*bool*, *default False*) – If True, saves files against the language of Excel, otherwise against the language of VBA. Not supported on macOS.
- **corrupt_load** (*int*, *default xlNormalLoad*) – Can be one of xlNormalLoad, xlRepairFile or xlExtractData. Not supported on macOS.

activate (*steal_focus=False*)

Activates the book.

Parameters **steal_focus** (*bool*, *default False*) – If True, make front-most window and hand over focus from Python to Excel.

api

Returns the native object (pywin32 or applescript obj) of the engine being used.

New in version 0.9.0.

app

Returns an app object that represents the creator of the book.

New in version 0.9.0.

classmethod caller()

References the calling book when the Python function is called from Excel via RunPython. Pack it into the function being called from Excel, e.g.:

```
import xlwings as xw

def my_macro():
    wb = xw.Book.caller()
    wb.sheets[0].range('A1').value = 1
```

To be able to easily invoke such code from Python for debugging, use `xw.Book.set_mock_caller()`.

New in version 0.3.0.

close()

Closes the book without saving it.

New in version 0.1.1.

fullname

Returns the name of the object, including its path on disk, as a string. Read-only String.

macro(name)

Runs a Sub or Function in Excel VBA.

Parameters **name** (Name of Sub or Function with or without module name, e.g. 'Module1.MyMacro' or 'MyMacro') –

Examples

This VBA function:

```
Function MySum(x, y)
    MySum = x + y
End Function
```

can be accessed like this:

```
>>> import xlwings as xw
>>> wb = xw.books.active
>>> my_sum = wb.macro('MySum')
>>> my_sum(1, 2)
3
```

See also: [`App.macro\(\)`](#)

New in version 0.7.1.

name

Returns the name of the book as str.

names

Returns a names collection that represents all the names in the specified book (including all sheet-specific names).

Changed in version 0.9.0.

save (*path=None*)

Saves the Workbook. If a path is being provided, this works like SaveAs() in Excel. If no path is specified and if the file hasn't been saved previously, it's being saved in the current working directory with the current filename. Existing files are overwritten without prompting.

Parameters **path** (*str or path-like object, default None*) – Full path to the workbook

Example

```
>>> import xlwings as xw
>>> wb = xw.Book()
>>> wb.save()
>>> wb.save(r'C:\path\to\new_file_name.xlsx')
```

New in version 0.3.1.

selection

Returns the selected cells as Range.

New in version 0.9.0.

set_mock_caller ()

Sets the Excel file which is used to mock `xw.Book.caller()` when the code is called from Python and not from Excel via RunPython.

Examples

```
# This code runs unchanged from Excel via RunPython and from Python,
↳ directly
import os
import xlwings as xw

def my_macro():
    sht = xw.Book.caller().sheets[0]
    sht.range('A1').value = 'Hello xlwings!'

if __name__ == '__main__':
    xw.Book('file.xlsm').set_mock_caller()
    my_macro()
```

New in version 0.3.1.

sheets

Returns a sheets collection that represents all the sheets in the book.

New in version 0.9.0.

23.2.5 Sheets

class `xlwings.main.Sheets` (*impl*)

A collection of all sheet objects:

```
>>> import xlwings as xw
>>> xw.sheets # active book
Sheets([<Sheet [Book1]Sheet1>, <Sheet [Book1]Sheet2>])
>>> xw.Book('Book1').sheets # specific book
Sheets([<Sheet [Book1]Sheet1>, <Sheet [Book1]Sheet2>])
```

New in version 0.9.0.

active

Returns the active Sheet.

add (*name=None, before=None, after=None*)

Creates a new Sheet and makes it the active sheet.

Parameters

- **name** (*str, default None*) – Name of the new sheet. If None, will default to Excel's default name.
- **before** (*Sheet, default None*) – An object that specifies the sheet before which the new sheet is added.
- **after** (*Sheet, default None*) – An object that specifies the sheet after which the new sheet is added.

23.2.6 Sheet

class `xlwings.Sheet` (*sheet=None, impl=None*)

A sheet object is a member of the *sheets* collection:

```
>>> import xlwings as xw
>>> wb = xw.Book()
>>> wb.sheets[0]
<Sheet [Book1]Sheet1>
>>> wb.sheets['Sheet1']
<Sheet [Book1]Sheet1>
>>> wb.sheets.add()
<Sheet [Book1]Sheet2>
```

Changed in version 0.9.0.

activate ()

Activates the Sheet and returns it.

api

Returns the native object (pywin32 or appscript obj) of the engine being used.

New in version 0.9.0.

autofit (*axis=None*)

Autofits the width of either columns, rows or both on a whole Sheet.

Parameters **axis** (*string, default None*) –

- To autofit rows, use one of the following: `rows` or `r`
- To autofit columns, use one of the following: `columns` or `c`
- To autofit rows and columns, provide no arguments

Examples

```
>>> import xlwings as xw
>>> wb = xw.Book()
>>> wb.sheets['Sheet1'].autofit('c')
>>> wb.sheets['Sheet1'].autofit('r')
>>> wb.sheets['Sheet1'].autofit()
```

New in version 0.2.3.

book

Returns the Book of the specified Sheet. Read-only.

cells

Returns a Range object that represents all the cells on the Sheet (not just the cells that are currently in use).

New in version 0.9.0.

charts

See [Charts](#)

New in version 0.9.0.

clear ()

Clears the content and formatting of the whole sheet.

clear_contents ()

Clears the content of the whole sheet but leaves the formatting.

delete ()

Deletes the Sheet.

index

Returns the index of the Sheet (1-based as in Excel).

name

Gets or sets the name of the Sheet.

names

Returns a names collection that represents all the sheet-specific names (names defined with the “SheetName!” prefix).

New in version 0.9.0.

pictures

See *Pictures*

New in version 0.9.0.

range (*cell1*, *cell2=None*)

Returns a Range object from the active sheet of the active book, see *Range()*.

New in version 0.9.0.

select ()

Selects the Sheet. Select only works on the active book.

New in version 0.9.0.

shapes

See *Shapes*

New in version 0.9.0.

used_range

Used Range of Sheet.

Returns

Return type `xw.Range`

New in version 0.13.0.

23.2.7 Range

class `xlwings.Range` (*cell1=None*, *cell2=None*, ***options*)

Returns a Range object that represents a cell or a range of cells.

Parameters

- **cell1** (*str or tuple or Range*) – Name of the range in the upper-left corner in A1 notation or as index-tuple or as name or as `xw.Range` object. It can also specify a range using the range operator (a colon), .e.g. ‘A1:B2’
- **cell2** (*str or tuple or Range, default None*) – Name of the range in the lower-right corner in A1 notation or as index-tuple or as name or as `xw.Range` object.

Examples

Active Sheet:

```
import xlwings as xw
xw.Range('A1')
xw.Range('A1:C3')
xw.Range((1,1))
xw.Range((1,1), (3,3))
xw.Range('NamedRange')
xw.Range(xw.Range('A1'), xw.Range('B2'))
```

Specific Sheet:

```
xw.books['MyBook.xlsx'].sheets[0].range('A1')
```

add_hyperlink (*address*, *text_to_display=None*, *screen_tip=None*)

Adds a hyperlink to the specified Range (single Cell)

Parameters

- **address** (*str*) – The address of the hyperlink.
- **text_to_display** (*str*, *default None*) – The text to be displayed for the hyperlink. Defaults to the hyperlink address.
- **screen_tip** (*str*, *default None*) – The screen tip to be displayed when the mouse pointer is paused over the hyperlink. Default is set to '<address> - Click once to follow. Click and hold to select this cell.'

New in version 0.3.0.

address

Returns a string value that represents the range reference. Use `get_address()` to be able to provide paramaters.

New in version 0.9.0.

api

Returns the native object (pywin32 or appscript obj) of the engine being used.

New in version 0.9.0.

autofit()

Autofits the width and height of all cells in the range.

- To autofit only the width of the columns use `xw.Range('A1:B2').columns.autofit()`
- To autofit only the height of the rows use `xw.Range('A1:B2').rows.autofit()`

Changed in version 0.9.0.

clear()

Clears the content and the formatting of a Range.

clear_contents()

Clears the content of a Range but leaves the formatting.

color

Gets and sets the background color of the specified Range.

To set the color, either use an RGB tuple (0, 0, 0) or a color constant. To remove the background, set the color to `None`, see Examples.

Returns RGB

Return type tuple

Examples

```
>>> import xlwings as xw
>>> wb = xw.Book()
>>> xw.Range('A1').color = (255, 255, 255)
>>> xw.Range('A2').color
(255, 255, 255)
>>> xw.Range('A2').color = None
>>> xw.Range('A2').color is None
True
```

New in version 0.3.0.

column

Returns the number of the first column in the in the specified range. Read-only.

Returns

Return type Integer

New in version 0.3.5.

column_width

Gets or sets the width, in characters, of a Range. One unit of column width is equal to the width of one character in the Normal style. For proportional fonts, the width of the character 0 (zero) is used.

If all columns in the Range have the same width, returns the width. If columns in the Range have different widths, returns `None`.

`column_width` must be in the range: $0 \leq \text{column_width} \leq 255$

Note: If the Range is outside the used range of the Worksheet, and columns in the Range have different widths, returns the width of the first column.

Returns

Return type float

New in version 0.4.0.

columns

Returns a *RangeColumns* object that represents the columns in the specified range.

New in version 0.9.0.

copy (*destination=None*)

Copy a range to a destination range or clipboard.

Parameters **destination** (`xlwings.Range`) – xlwings Range to which the specified range will be copied. If omitted, the range is copied to the Clipboard.**Returns****Return type** None**count**

Returns the number of cells.

current_region

This property returns a Range object representing a range bounded by (but not including) any combination of blank rows and blank columns or the edges of the worksheet. It corresponds to Ctrl-*, on Windows and Shift-Ctrl-Space on Mac.

Returns**Return type** Range object**delete** (*shift=None*)

Deletes a cell or range of cells.

Parameters **shift** (*str, default None*) – Use left or up. If omitted, Excel decides based on the shape of the range.**Returns****Return type** None**end** (*direction*)

Returns a Range object that represents the cell at the end of the region that contains the source range. Equivalent to pressing Ctrl+Up, Ctrl+down, Ctrl+left, or Ctrl+right.

Parameters **direction** (*One of 'up', 'down', 'right', 'left'*) –

Examples

```
>>> import xlwings as xw
>>> wb = xw.Book()
>>> xw.Range('A1:B2').value = 1
>>> xw.Range('A1').end('down')
<Range [Book1]Sheet1!$A$2>
>>> xw.Range('B2').end('right')
<Range [Book1]Sheet1!$B$2>
```

New in version 0.9.0.

expand (*mode='table'*)Expands the range according to the mode provided. Ignores empty top-left cells (unlike `Range.end()`).

Parameters *mode* (*str*, *default* 'table') – One of 'table' (=down and right), 'down', 'right'.

Returns

Return type *Range*

Examples

```
>>> import xlwings as xw
>>> wb = xw.Book()
>>> xw.Range('A1').value = [[None, 1], [2, 3]]
>>> xw.Range('A1').expand().address
$A$1:$B$2
>>> xw.Range('A1').expand('right').address
$A$1:$B$1
```

New in version 0.9.0.

formula

Gets or sets the formula for the given Range.

formula2

Gets or sets the formula2 for the given Range.

formula_array

Gets or sets an array formula for the given Range.

New in version 0.7.1.

get_address (*row_absolute=True*, *column_absolute=True*, *include_sheetname=False*, *external=False*)

Returns the address of the range in the specified format. *address* can be used instead if none of the defaults need to be changed.

Parameters

- **row_absolute** (*bool*, *default* *True*) – Set to *True* to return the row part of the reference as an absolute reference.
- **column_absolute** (*bool*, *default* *True*) – Set to *True* to return the column part of the reference as an absolute reference.
- **include_sheetname** (*bool*, *default* *False*) – Set to *True* to include the Sheet name in the address. Ignored if *external=True*.
- **external** (*bool*, *default* *False*) – Set to *True* to return an external reference with workbook and worksheet name.

Returns

Return type *str*

Examples

```
>>> import xlwings as xw
>>> wb = xw.Book()
>>> xw.Range((1,1)).get_address()
'$A$1'
>>> xw.Range((1,1)).get_address(False, False)
'A1'
>>> xw.Range((1,1), (3,3)).get_address(True, False, True)
'Sheet1!A$1:C$3'
>>> xw.Range((1,1), (3,3)).get_address(True, False, external=True)
'[Book1]Sheet1!A$1:C$3'
```

New in version 0.2.3.

height

Returns the height, in points, of a Range. Read-only.

Returns

Return type float

New in version 0.4.0.

hyperlink

Returns the hyperlink address of the specified Range (single Cell only)

Examples

```
>>> import xlwings as xw
>>> wb = xw.Book()
>>> xw.Range('A1').value
'www.xlwings.org'
>>> xw.Range('A1').hyperlink
'http://www.xlwings.org'
```

New in version 0.3.0.

insert (*shift=None, copy_origin='format_from_left_or_above'*)

Insert a cell or range of cells into the sheet.

Parameters

- **shift** (*str, default None*) – Use right or down. If omitted, Excel decides based on the shape of the range.
- **copy_origin** (*str, default format_from_left_or_above*) – Use `format_from_left_or_above` or `format_from_right_or_below`. Note that this is not supported on macOS.

Returns

Return type None

last_cell

Returns the bottom right cell of the specified range. Read-only.

Returns

Return type *Range*

Example

```
>>> import xlwings as xw
>>> wb = xw.Book()
>>> rng = xw.Range('A1:E4')
>>> rng.last_cell.row, rng.last_cell.column
(4, 5)
```

New in version 0.3.5.

left

Returns the distance, in points, from the left edge of column A to the left edge of the range. Read-only.

Returns

Return type float

New in version 0.6.0.

merge (*across=False*)

Creates a merged cell from the specified Range object.

Parameters **across** (*bool, default False*) – True to merge cells in each row of the specified Range as separate merged cells.

merge_area

Returns a Range object that represents the merged Range containing the specified cell. If the specified cell isn't in a merged range, this property returns the specified cell.

merge_cells

Returns True if the Range contains merged cells, otherwise False

name

Sets or gets the name of a Range.

New in version 0.4.0.

number_format

Gets and sets the number_format of a Range.

Examples

```

>>> import xlwings as xw
>>> wb = xw.Book()
>>> xw.Range('A1').number_format
'General'
>>> xw.Range('A1:C3').number_format = '0.00%'
>>> xw.Range('A1:C3').number_format
'0.00%'

```

New in version 0.2.3.

offset (*row_offset=0, column_offset=0*)

Returns a Range object that represents a Range that's offset from the specified range.

Returns Range object

Return type *Range*

New in version 0.3.0.

options (*convert=None, **options*)

Allows you to set a converter and their options. Converters define how Excel Ranges and their values are being converted both during reading and writing operations. If no explicit converter is specified, the base converter is being applied, see [Converters and Options](#).

Parameters **convert** (*object, default None*) – A converter, e.g. dict, np.array, pd.DataFrame, pd.Series, defaults to default converter

Keyword Arguments

- **ndim** (*int, default None*) – number of dimensions
- **numbers** (*type, default None*) – type of numbers, e.g. int
- **dates** (*type, default None*) – e.g. datetime.date defaults to datetime.datetime
- **empty** (*object, default None*) – transformation of empty cells
- **transpose** (*Boolean, default False*) – transpose values
- **expand** (*str, default None*) – One of 'table', 'down', 'right'
=> For converter-specific options, see [Converters and Options](#).

Returns

Return type Range object

New in version 0.7.0.

paste (*paste=None, operation=None, skip_blanks=False, transpose=False*)

Pastes a range from the clipboard into the specified range.

Parameters

- **paste** (*str, default None*) – One of all_merging_conditional_formats, all, all_except_borders, all_using_source_theme,

column_widths, comments, formats, formulas,
formulas_and_number_formats, validation, values,
values_and_number_formats.

- **operation** (*str*, *default None*) – One of “add”, “divide”, “multiply”, “subtract”.
- **skip_blanks** (*bool*, *default False*) – Set to True to skip over blank cells
- **transpose** (*bool*, *default False*) – Set to True to transpose rows and columns.

Returns

Return type None

raw_value

Gets and sets the values directly as delivered from/accepted by the engine that is being used (pywin32 or appscript) without going through any of xlwings’ data cleaning/converting. This can be helpful if speed is an issue but naturally will be engine specific, i.e. might remove the cross-platform compatibility.

resize (*row_size=None*, *column_size=None*)

Resizes the specified Range

Parameters

- **row_size** (*int > 0*) – The number of rows in the new range (if None, the number of rows in the range is unchanged).
- **column_size** (*int > 0*) – The number of columns in the new range (if None, the number of columns in the range is unchanged).

Returns Range object

Return type *Range*

New in version 0.3.0.

row

Returns the number of the first row in the specified range. Read-only.

Returns

Return type Integer

New in version 0.3.5.

row_height

Gets or sets the height, in points, of a Range. If all rows in the Range have the same height, returns the height. If rows in the Range have different heights, returns None.

row_height must be in the range: 0 <= row_height <= 409.5

Note: If the Range is outside the used range of the Worksheet, and rows in the Range have different heights, returns the height of the first row.

Returns**Return type** float

New in version 0.4.0.

rowsReturns a *RangeRows* object that represents the rows in the specified range.

New in version 0.9.0.

select ()

Selects the range. Select only works on the active book.

New in version 0.9.0.

shape

Tuple of Range dimensions.

New in version 0.3.0.

sheet

Returns the Sheet object to which the Range belongs.

New in version 0.9.0.

size

Number of elements in the Range.

New in version 0.3.0.

top

Returns the distance, in points, from the top edge of row 1 to the top edge of the range. Read-only.

Returns**Return type** float

New in version 0.6.0.

unmerge ()

Separates a merged area into individual cells.

value

Gets and sets the values for the given Range.

Returns object**Return type** returned object depends on the converter being used, see *xlwings.Range.options()***width**

Returns the width, in points, of a Range. Read-only.

Returns**Return type** float

New in version 0.4.0.

23.2.8 RangeRows

class `xlwings.RangeRows` (*rng*)

Represents the rows of a range. Do not construct this class directly, use `Range.rows` instead.

Example

```
import xlwings as xw

rng = xw.Range('A1:C4')

assert len(rng.rows) == 4 # or rng.rows.count

rng.rows[0].value = 'a'

assert rng.rows[2] == xw.Range('A3:C3')
assert rng.rows(2) == xw.Range('A2:C2')

for r in rng.rows:
    print(r.address)
```

autofit()

Autofits the height of the rows.

count

Returns the number of rows.

New in version 0.9.0.

23.2.9 RangeColumns

class `xlwings.RangeColumns` (*rng*)

Represents the columns of a range. Do not construct this class directly, use `Range.columns` instead.

Example

```
import xlwings as xw

rng = xw.Range('A1:C4')

assert len(rng.columns) == 3 # or rng.columns.count

rng.columns[0].value = 'a'

assert rng.columns[2] == xw.Range('C1:C4')
assert rng.columns(2) == xw.Range('B1:B4')
```

(continues on next page)

(continued from previous page)

```
for c in rng.columns:
    print(c.address)
```

autofit()

Autofits the width of the columns.

count

Returns the number of columns.

New in version 0.9.0.

23.2.10 Shapes

class `xlwings.main.Shapes` (*impl*)

A collection of all shape objects on the specified sheet:

```
>>> import xlwings as xw
>>> xw.books['Book1'].sheets[0].shapes
Shapes([<Shape 'Oval 1' in <Sheet [Book1]Sheet1>>, <Shape 'Rectangle 1'
↳in <Sheet [Book1]Sheet1>>])
```

New in version 0.9.0.

api

Returns the native object (pywin32 or appscript obj) of the engine being used.

count

Returns the number of objects in the collection.

23.2.11 Shape

class `xlwings.Shape` (**args, **options*)

The shape object is a member of the *shapes* collection:

```
>>> import xlwings as xw
>>> sht = xw.books['Book1'].sheets[0]
>>> sht.shapes[0] # or sht.shapes['ShapeName']
<Shape 'Rectangle 1' in <Sheet [Book1]Sheet1>>
```

Changed in version 0.9.0.

activate()

Activates the shape.

New in version 0.5.0.

delete()

Deletes the shape.

New in version 0.5.0.

height

Returns or sets the number of points that represent the height of the shape.

New in version 0.5.0.

left

Returns or sets the number of points that represent the horizontal position of the shape.

New in version 0.5.0.

name

Returns or sets the name of the shape.

New in version 0.5.0.

parent

Returns the parent of the shape.

New in version 0.9.0.

top

Returns or sets the number of points that represent the vertical position of the shape.

New in version 0.5.0.

type

Returns the type of the shape.

New in version 0.9.0.

width

Returns or sets the number of points that represent the width of the shape.

New in version 0.5.0.

23.2.12 Charts

class `xlwings.main.Charts` (*impl*)

A collection of all chart objects on the specified sheet:

```
>>> import xlwings as xw
>>> xw.books['Book1'].sheets[0].charts
Charts([<Chart 'Chart 1' in <Sheet [Book1]Sheet1>>, <Chart 'Chart 1' in
↳<Sheet [Book1]Sheet1>>])
```

New in version 0.9.0.

add (*left=0, top=0, width=355, height=211*)

Creates a new chart on the specified sheet.

Parameters

- **left** (*float, default 0*) – left position in points
- **top** (*float, default 0*) – top position in points
- **width** (*float, default 355*) – width in points

- **height** (*float, default 211*) – height in points

Returns

Return type *Chart*

Examples

```
>>> import xlwings as xw
>>> sht = xw.Book().sheets[0]
>>> sht.range('A1').value = [['Foo1', 'Foo2'], [1, 2]]
>>> chart = sht.charts.add()
>>> chart.set_source_data(sht.range('A1').expand())
>>> chart.chart_type = 'line'
>>> chart.name
'Chart1'
```

api

Returns the native object (pywin32 or appscript obj) of the engine being used.

count

Returns the number of objects in the collection.

23.2.13 Chart

class `xlwings.Chart` (*name_or_index=None, impl=None*)

The chart object is a member of the *charts* collection:

```
>>> import xlwings as xw
>>> sht = xw.books['Book1'].sheets[0]
>>> sht.charts[0] # or sht.charts['ChartName']
<Chart 'Chart 1' in <Sheet [Book1]Sheet1>>
```

api

Returns the native object (pywin32 or appscript obj) of the engine being used.

New in version 0.9.0.

chart_type

Returns and sets the chart type of the chart.

New in version 0.1.1.

delete()

Deletes the chart.

height

Returns or sets the number of points that represent the height of the chart.

left

Returns or sets the number of points that represent the horizontal position of the chart.

name

Returns or sets the name of the chart.

parent

Returns the parent of the chart.

New in version 0.9.0.

set_source_data (*source*)

Sets the source data range for the chart.

Parameters **source** (*Range*) – Range object, e.g. `xw.books['Book1'].sheets[0].range('A1')`

top

Returns or sets the number of points that represent the vertical position of the chart.

width

Returns or sets the number of points that represent the width of the chart.

23.2.14 Pictures

class `xlwings.main.Pictures` (*impl*)

A collection of all picture objects on the specified sheet:

```
>>> import xlwings as xw
>>> xw.books['Book1'].sheets[0].pictures
Pictures([<Picture 'Picture 1' in <Sheet [Book1]Sheet1>>, <Picture
↪ 'Picture 2' in <Sheet [Book1]Sheet1>>])
```

New in version 0.9.0.

add (*image*, *link_to_file=False*, *save_with_document=True*, *left=0*, *top=0*, *width=None*, *height=None*, *name=None*, *update=False*)
Adds a picture to the specified sheet.

Parameters

- **image** (*str* or *path-like object* or *matplotlib.figure.Figure*) – Either a filepath or a Matplotlib figure object.
- **left** (*float*, *default 0*) – Left position in points.
- **top** (*float*, *default 0*) – Top position in points.
- **width** (*float*, *default None*) – Width in points. If PIL/Pillow is installed, it defaults to the width of the picture. Otherwise it defaults to 100 points.
- **height** (*float*, *default None*) – Height in points. If PIL/Pillow is installed, it defaults to the height of the picture. Otherwise it defaults to 100 points.
- **name** (*str*, *default None*) – Excel picture name. Defaults to Excel standard name if not provided, e.g. 'Picture 1'.

- **update** (*bool*, *default False*) – Replace an existing picture with the same name. Requires name to be set.

Returns

Return type *Picture*

Examples

1. Picture

```
>>> import xlwings as xw
>>> sht = xw.Book().sheets[0]
>>> sht.pictures.add(r'C:\path\to\file.jpg')
<Picture 'Picture 1' in <Sheet [Book1]Sheet1>>
```

2. Matplotlib

```
>>> import matplotlib.pyplot as plt
>>> fig = plt.figure()
>>> plt.plot([1, 2, 3, 4, 5])
>>> sht.pictures.add(fig, name='MyPlot', update=True)
<Picture 'MyPlot' in <Sheet [Book1]Sheet1>>
```

api

Returns the native object (pywin32 or appscript obj) of the engine being used.

count

Returns the number of objects in the collection.

23.2.15 Picture

class xlwings.**Picture** (*impl=None*)

The picture object is a member of the *pictures* collection:

```
>>> import xlwings as xw
>>> sht = xw.books['Book1'].sheets[0]
>>> sht.pictures[0] # or sht.charts['PictureName']
<Picture 'Picture 1' in <Sheet [Book1]Sheet1>>
```

Changed in version 0.9.0.

api

Returns the native object (pywin32 or appscript obj) of the engine being used.

New in version 0.9.0.

delete()

Deletes the picture.

New in version 0.5.0.

height

Returns or sets the number of points that represent the height of the picture.

New in version 0.5.0.

left

Returns or sets the number of points that represent the horizontal position of the picture.

New in version 0.5.0.

name

Returns or sets the name of the picture.

New in version 0.5.0.

parent

Returns the parent of the picture.

New in version 0.9.0.

top

Returns or sets the number of points that represent the vertical position of the picture.

New in version 0.5.0.

update (*image*)

Replaces an existing picture with a new one, taking over the attributes of the existing picture.

Parameters **image** (*str or path-like object or matplotlib.figure.Figure*) – Either a filepath or a Matplotlib figure object.

New in version 0.5.0.

width

Returns or sets the number of points that represent the width of the picture.

New in version 0.5.0.

23.2.16 Names

class `xlwings.main.Names` (*impl*)

A collection of all name objects in the workbook:

```
>>> import xlwings as xw
>>> sht = xw.books['Book1'].sheets[0]
>>> sht.names
[<Name 'MyName': =Sheet1!$A$3>]
```

New in version 0.9.0.

add (*name, refers_to*)

Defines a new name for a range of cells.

Parameters

- **name** (*str*) – Specifies the text to use as the name. Names cannot include spaces and cannot be formatted as cell references.
- **refers_to** (*str*) – Describes what the name refers to, in English, using A1-style notation.

Returns**Return type** *Name*

New in version 0.9.0.

api

Returns the native object (pywin32 or appscript obj) of the engine being used.

New in version 0.9.0.

count

Returns the number of objects in the collection.

23.2.17 Name

class `xlwings.Name` (*impl*)The name object is a member of the *names* collection:

```
>>> import xlwings as xw
>>> sht = xw.books['Book1'].sheets[0]
>>> sht.names[0] # or sht.names['MyName']
<Name 'MyName': =Sheet1!$A$3>
```

New in version 0.9.0.

api

Returns the native object (pywin32 or appscript obj) of the engine being used.

New in version 0.9.0.

delete()

Deletes the name.

New in version 0.9.0.

name

Returns or sets the name of the name object.

New in version 0.9.0.

refers_to

Returns or sets the formula that the name is defined to refer to, in A1-style notation, beginning with an equal sign.

New in version 0.9.0.

refers_to_range

Returns the Range object referred to by a Name object.

New in version 0.9.0.

23.3 UDF decorators

`xlwings.func(category="xlwings", volatile=False, call_in_wizard=True)`

Functions decorated with `xlwings.func` will be imported as `Function` to Excel when running “Import Python UDFs”.

category [int or str, default “xlwings”] 1-14 represent built-in categories, for user-defined categories use strings

New in version 0.10.3.

volatile [bool, default False] Marks a user-defined function as volatile. A volatile function must be recalculated whenever calculation occurs in any cells on the worksheet. A nonvolatile function is recalculated only when the input variables change. This method has no effect if it’s not inside a user-defined function used to calculate a worksheet cell.

New in version 0.10.3.

call_in_wizard [bool, default True] Set to False to suppress the function call in the function wizard.

New in version 0.10.3.

`xlwings.sub()`

Functions decorated with `xlwings.sub` will be imported as `Sub` (i.e. macro) to Excel when running “Import Python UDFs”.

`xlwings.arg(arg, convert=None, **options)`

Apply converters and options to arguments, see also [`Range.options\(\)`](#).

Examples:

Convert `x` into a 2-dimensional numpy array:

```
import xlwings as xw
import numpy as np

@xw.func
@xw.arg('x', np.array, ndim=2)
def add_one(x):
    return x + 1
```

`xlwings.ret(convert=None, **options)`

Apply converters and options to return values, see also [`Range.options\(\)`](#).

Examples

1) Suppress the index and header of a returned DataFrame:

```
import pandas as pd

@xw.func
```

(continues on next page)

(continued from previous page)

```
@xw.ret(index=False, header=False)
def get_dataframe(n, m):
    return pd.DataFrame(np.arange(n * m).reshape((n, m)))
```

2) Dynamic array:

Note: If your version of Excel supports the new native dynamic arrays, then you don't have to do anything special, and you shouldn't use the `expand` decorator! To check if your version of Excel supports it, see if you have the `=UNIQUE()` formula available. Native dynamic arrays were introduced in Office 365 Insider Fast at the end of September 2018.

`expand='table'` turns the UDF into a dynamic array. Currently you must not use volatile functions as arguments of a dynamic array, e.g. you cannot use `=TODAY()` as part of a dynamic array. Also note that a dynamic array needs an empty row and column at the bottom and to the right and will overwrite existing data without warning.

Unlike standard Excel arrays, dynamic arrays are being used from a single cell like a standard function and auto-expand depending on the dimensions of the returned array:

```
import xlwings as xw
import numpy as np

@xw.func
@xw.ret(expand='table')
def dynamic_array(n, m):
    return np.arange(n * m).reshape((n, m))
```

New in version 0.10.0.

23.4 Reports

```
xlwings.pro.reports.create_report(template, output, book_settings=None,
                                  app=None, **data)
```

This feature requires xlwings *PRO*.

Writes the values of all key word arguments to the `output` file according to the `template` and the variables contained in there (Jinja variable syntax). Following variable types are supported:

strings, numbers, lists, simple dicts, NumPy arrays, Pandas DataFrames, PIL Image objects that have a filename and Matplotlib figures.

Parameters

- **template** (*str*) – Path to your Excel template, e.g. `r'C:\Path\to\my_template.xlsx'`
- **output** (*str*) – Path to your Report, e.g. `r'C:\Path\to\my_report.xlsx'`

- **book_settings** (*dict*, *default None*) – A dictionary of xlwings. Book parameters, for details see: [xlwings.Book](#). For example: `book_settings={'update_links': False}`.
- **app** (*xlwings App*, *default None*) – By passing in an xlwings App instance, you can control where your report runs and configure things like `hidden=True`. For details see [xlwings.App](#). By default, it creates the report in the currently active instance of Excel.
- **data** (*kwargs*) – All key/value pairs that are used in the template.

Returns wb

Return type `xlwings Book`

Examples

In `my_template.xlsx`, put the following Jinja variables in two cells: `{{ title }}` and `{{ df }}`

```
>>> from xlwings.pro.reports import create_report
>>> import pandas as pd
>>> df = pd.DataFrame(data=[[1,2],[3,4]])
>>> wb = create_report('my_template.xlsx', 'my_report.xlsx', title=
↪ 'MyTitle', df=df)
```

With many template variables it may be useful to collect the data first:

```
>>> data = dict(title='MyTitle', df=df)
>>> wb = create_report('my_template.xlsx', 'my_report.xlsx', **data)
```

If you need to handle external links or a password, use it like so:

```
>>> wb = create_report('my_template.xlsx', 'my_report.xlsx',
↪ book_settings={'update_links': True, 'password':
↪ 'mypassword'},
↪ **data)
```

You can control the Excel instance by passing in an xlwings App instance. For example, to run the report in a separate and hidden instance of Excel, do the following:

```
>>> import xlwings as xw
>>> from xlwings.pro.reports import create_report
>>> app = xw.App(hidden=True) # Separate and hidden Excel instance
>>> wb = create_report('my_template.xlsx', 'my_report.xlsx', app=app,
↪ **data)
>>> app.quit() # Close the wb and quit the Excel instance
```


New in version 0.13.0.

24.1 Quickstart

xlwings offers an easy way to expose an Excel workbook via REST API both on Windows and macOS. This can be useful when you have a workbook running on a single computer and want to access it from another computer. Or you can build a Linux based web app that can interact with a legacy Excel application while you are in the progress of migrating the Excel functionality into your web app (if you need help with that, [give us a shout](#)).

You can run the REST API server from a command prompt or terminal as follows (this requires Flask>=1.0, so make sure to `pip install Flask`):

```
xlwings restapi run
```

Then perform a GET request e.g. via PowerShell on Windows or Terminal on Mac (while having an unsaved “Book1” open). Note that you need to run the server and the GET request from two separate terminals (or you can use something more convenient like [Postman](#) or [Insomnia](#) for testing the API):

```
$ curl "http://127.0.0.1:5000/book/book1/sheets/0/range/A1:B2"
{
  "address": "$A$1:$B$2",
  "color": null,
  "column": 1,
  "column_width": 10.0,
  "count": 4,
  "current_region": "$A$1:$B$2",
  "formula": [
```

(continues on next page)

(continued from previous page)

```
[
  "1",
  "2"
],
[
  "3",
  "4"
]
],
"formula_array": null,
"height": 32.0,
"last_cell": "$B$2",
"left": 0.0,
"name": null,
"number_format": "General",
"row": 1,
"row_height": 16.0,
"shape": [
  2,
  2
],
"size": 4,
"top": 0.0,
"value": [
  [
    1.0,
    2.0
  ],
  [
    3.0,
    4.0
  ]
],
"width": 130.0
}
```

In the command prompt where your server is running, press `Ctrl-C` to shut it down again.

The xlwings REST API is a thin wrapper around the *Python API* which makes it very easy if you have worked previously with xlwings. It also means that the REST API does require the Excel application to be up and running which makes it a great choice if the data in your Excel workbook is constantly changing as the REST API will always deliver the current state of the workbook without the need of saving it first.

Note: Currently, we only provide the GET methods to read the workbook. If you are also interested in the POST methods to edit the workbook, let us know via GitHub issues. Some other things will also need improvement, most notably exception handling.

24.2 Run the server

`xlwings restapi run` will run a Flask development server on <http://127.0.0.1:5000>. You can provide `--host` and `--port` as command line args and it also respects the Flask environment variables like `FLASK_ENV=development`.

If you want to have more control, you can run the server directly with Flask, see the [Flask docs](#) for more details:

```
set FLASK_APP=xlwings.rest.api
flask run
```

If you are on Mac, use `export FLASK_APP=xlwings.rest.api` instead of `set FLASK_APP=xlwings.rest.api`.

For production, you can use any WSGI HTTP Server like [gunicorn](#) (on Mac) or [waitress](#) (on Mac/Windows) to serve the API. For example, with gunicorn you would do: `gunicorn xlwings.rest.api:api`. Or with waitress (adjust the host accordingly if you want to make the api accessible from outside of localhost):

```
from xlwings.rest.api import api
from waitress import serve
serve(wsgiapp, host='127.0.0.1', port=5000)
```

24.3 Indexing

While the Python API offers Python's 0-based indexing (e.g. `xw.books[0]`) as well as Excel's 1-based indexing (e.g. `xw.books(1)`), the REST API only offers 0-based indexing, e.g. `/books/0`.

24.4 Range Options

The REST API accepts Range options as query parameters, see `xlwings.Range.options()` e.g.

`/book/book1/sheets/0/range/A1?expand=table&transpose=true`

Remember that options only affect the value property.

24.5 Endpoint overview

End-point	Corresponds to	Short Description
<i>/book</i>	<i>Book</i>	Finds your workbook across all open instances of Excel and will open it if it can't find it
<i>/books</i>	<i>Books</i>	Books collection of the active Excel instance
<i>/apps</i>	<i>Apps</i>	This allows you to specify the Excel instance you want to work with

24.6 Endpoint details

24.6.1 /book

GET /book/<fullname_or_name>

Example response:

```
{
  "app": 1104,
  "fullname": "C:\\Users\\felix\\DEV\\xlwings\\scripts\\Book1.xlsx",
  "name": "Book1.xlsx",
  "names": [
    "Sheet1!myname1",
    "myname2"
  ],
  "selection": "Sheet2!$A$1",
  "sheets": [
    "Sheet1",
    "Sheet2"
  ]
}
```

GET /book/<fullname_or_name>/names

Example response:

```
{
  "names": [
    {
      "name": "Sheet1!myname1",
      "refers_to": "=Sheet1!$B$2:$C$3"
    },
    {
      "name": "myname2",
      "refers_to": "=Sheet1!$A$1"
    }
  ]
}
```

GET /book/<fullname_or_name>/names/<name>

Example response:

```
{
  "name": "myname2",
  "refers_to": "=Sheet1!$A$1"
}
```

GET /book/<fullname_or_name>/names/<name>/range

Example response:

```
{
  "address": "$A$1",
  "color": null,
  "column": 1,
  "column_width": 8.47,
  "count": 1,
  "current_region": "$A$1:$B$2",
  "formula": "=1+1.1",
  "formula_array": "=1+1,1",
  "height": 14.25,
  "last_cell": "$A$1",
  "left": 0.0,
  "name": "myname2",
  "number_format": "General",
  "row": 1,
  "row_height": 14.3,
  "shape": [
    1,
    1
  ],
  "size": 1,
  "top": 0.0,
  "value": 2.1,
  "width": 51.0
}
```

GET /book/<fullname_or_name>/sheets

Example response:

```
{
  "sheets": [
    {
      "charts": [
        "Chart 1"
      ],
      "name": "Sheet1",
      "names": [
        "Sheet1!myname1"
      ],
      "pictures": [
        "Picture 3"
      ],
      "shapes": [
        "Chart 1",
        "Picture 3"
      ],
      "used_range": "$A$1:$B$2"
    },
    {
      "charts": [],
      "name": "Sheet2",
      "names": [],

```

(continues on next page)

(continued from previous page)

```
    "pictures": [],
    "shapes": [],
    "used_range": "$A$1"
  }
]
```

GET /book/<fullname_or_name>/sheets/<sheet_name_or_ix>**Example response:**

```
{
  "charts": [
    "Chart 1"
  ],
  "name": "Sheet1",
  "names": [
    "Sheet1!myname1"
  ],
  "pictures": [
    "Picture 3"
  ],
  "shapes": [
    "Chart 1",
    "Picture 3"
  ],
  "used_range": "$A$1:$B$2"
}
```

GET /book/<fullname_or_name>/sheets/<sheet_name_or_ix>/charts**Example response:**

```
{
  "charts": [
    {
      "chart_type": "line",
      "height": 211.0,
      "left": 0.0,
      "name": "Chart 1",
      "top": 0.0,
      "width": 355.0
    }
  ]
}
```

GET /book/<fullname_or_name>/sheets/<sheet_name_or_ix>/charts/<chart_name_or_ix>**Example response:**

```
{
  "chart_type": "line",
```

(continues on next page)

(continued from previous page)

```
{
  "height": 211.0,
  "left": 0.0,
  "name": "Chart 1",
  "top": 0.0,
  "width": 355.0
}
```

GET /book/<fullname_or_name>/sheets/<sheet_name_or_ix>/names

Example response:

```
{
  "names": [
    {
      "name": "Sheet1!myname1",
      "refers_to": "=Sheet1!$B$2:$C$3"
    }
  ]
}
```

GET /book/<fullname_or_name>/sheets/<sheet_name_or_ix>/names/<sheet_scope_name>

Example response:

```
{
  "name": "Sheet1!myname1",
  "refers_to": "=Sheet1!$B$2:$C$3"
}
```

GET /book/<fullname_or_name>/sheets/<sheet_name_or_ix>/names/<sheet_scope_name>/range

Example response:

```
{
  "address": "$B$2:$C$3",
  "color": null,
  "column": 2,
  "column_width": 8.47,
  "count": 4,
  "current_region": "$A$1:$B$2",
  "formula": [
    [
      "",
      ""
    ],
    [
      "",
      ""
    ]
  ],
  "formula_array": "",
  "height": 28.5,
```

(continues on next page)

(continued from previous page)

```
"last_cell": "$C$3",
"left": 51.0,
"name": "Sheet1!myname1",
"number_format": "General",
"row": 2,
"row_height": 14.3,
"shape": [
  2,
  2
],
"size": 4,
"top": 14.25,
"value": [
  [
    null,
    null
  ],
  [
    null,
    null
  ]
],
"width": 102.0
}
```

GET /book/<fullname_or_name>/sheets/<sheet_name_or_ix>/pictures

Example response:

```
{
  "pictures": [
    {
      "height": 100.0,
      "left": 0.0,
      "name": "Picture 3",
      "top": 0.0,
      "width": 100.0
    }
  ]
}
```

GET /book/<fullname_or_name>/sheets/<sheet_name_or_ix>/pictures/<picture_name_or_ix>

Example response:

```
{
  "height": 100.0,
  "left": 0.0,
  "name": "Picture 3",
  "top": 0.0,
  "width": 100.0
}
```


GET /book/<fullname_or_name>/sheets/<sheet_name_or_ix>/range

Example response:

```
{
  "address": "$A$1:$B$2",
  "color": null,
  "column": 1,
  "column_width": 8.47,
  "count": 4,
  "current_region": "$A$1:$B$2",
  "formula": [
    [
      "=1+1.1",
      "a string"
    ],
    [
      "43395.0064583333",
      ""
    ]
  ],
  "formula_array": null,
  "height": 28.5,
  "last_cell": "$B$2",
  "left": 0.0,
  "name": null,
  "number_format": null,
  "row": 1,
  "row_height": 14.3,
  "shape": [
    2,
    2
  ],
  "size": 4,
  "top": 0.0,
  "value": [
    [
      2.1,
      "a string"
    ],
    [
      "Mon, 22 Oct 2018 00:09:18 GMT",
      null
    ]
  ],
  "width": 102.0
}
```

GET /book/<fullname_or_name>/sheets/<sheet_name_or_ix>/range/<address>

Example response:

```
{
  "address": "$A$1:$B$2",
```

(continues on next page)

(continued from previous page)

```

"color": null,
"column": 1,
"column_width": 8.47,
"count": 4,
"current_region": "$A$1:$B$2",
"formula": [
  [
    "=1+1.1",
    "a string"
  ],
  [
    "43395.0064583333",
    ""
  ]
],
"formula_array": null,
"height": 28.5,
"last_cell": "$B$2",
"left": 0.0,
"name": null,
"number_format": null,
"row": 1,
"row_height": 14.3,
"shape": [
  2,
  2
],
"size": 4,
"top": 0.0,
"value": [
  [
    2.1,
    "a string"
  ],
  [
    "Mon, 22 Oct 2018 00:09:18 GMT",
    null
  ]
],
"width": 102.0
}

```

GET /book/<fullname_or_name>/sheets/<sheet_name_or_ix>/shapes

Example response:

```

{
  "shapes": [
    {
      "height": 211.0,
      "left": 0.0,
      "name": "Chart 1",

```

(continues on next page)

(continued from previous page)

```

    "top": 0.0,
    "type": "chart",
    "width": 355.0
  },
  {
    "height": 100.0,
    "left": 0.0,
    "name": "Picture 3",
    "top": 0.0,
    "type": "picture",
    "width": 100.0
  }
]
}

```

GET /book/<fullname_or_name>/sheets/<sheet_name_or_ix>/shapes/<shape_name_or_ix>

Example response:

```

{
  "height": 211.0,
  "left": 0.0,
  "name": "Chart 1",
  "top": 0.0,
  "type": "chart",
  "width": 355.0
}

```

24.6.2 /books

GET /books

Example response:

```

{
  "books": [
    {
      "app": 1104,
      "fullname": "Book1",
      "name": "Book1",
      "names": [],
      "selection": "Sheet2!$A$1",
      "sheets": [
        "Sheet1"
      ]
    },
    {
      "app": 1104,
      "fullname": "C:\\Users\\felix\\DEV\\xlwings\\scripts\\Book1.xlsx",
      "name": "Book1.xlsx",

```

(continues on next page)

(continued from previous page)

```

    "names": [
      "Sheet1!myname1",
      "myname2"
    ],
    "selection": "Sheet2!$A$1",
    "sheets": [
      "Sheet1",
      "Sheet2"
    ]
  },
  {
    "app": 1104,
    "fullname": "Book4",
    "name": "Book4",
    "names": [],
    "selection": "Sheet2!$A$1",
    "sheets": [
      "Sheet1"
    ]
  }
]
}

```

GET /books/<book_name_or_ix>

Example response:

```

{
  "app": 1104,
  "fullname": "C:\\Users\\felix\\DEV\\xlwings\\scripts\\Book1.xlsx",
  "name": "Book1.xlsx",
  "names": [
    "Sheet1!myname1",
    "myname2"
  ],
  "selection": "Sheet2!$A$1",
  "sheets": [
    "Sheet1",
    "Sheet2"
  ]
}

```

GET /books/<book_name_or_ix>/names

Example response:

```

{
  "names": [
    {
      "name": "Sheet1!myname1",
      "refers_to": "=Sheet1!$B$2:$C$3"
    },
  ],
}

```

(continues on next page)

(continued from previous page)

```
{
  "name": "myname2",
  "refers_to": "=Sheet1!$A$1"
}
```

GET /books/<book_name_or_ix>/names/<name>

Example response:

```
{
  "name": "myname2",
  "refers_to": "=Sheet1!$A$1"
}
```

GET /books/<book_name_or_ix>/names/<name>/range

Example response:

```
{
  "address": "$A$1",
  "color": null,
  "column": 1,
  "column_width": 8.47,
  "count": 1,
  "current_region": "$A$1:$B$2",
  "formula": "=1+1.1",
  "formula_array": "=1+1,1",
  "height": 14.25,
  "last_cell": "$A$1",
  "left": 0.0,
  "name": "myname2",
  "number_format": "General",
  "row": 1,
  "row_height": 14.3,
  "shape": [
    1,
    1
  ],
  "size": 1,
  "top": 0.0,
  "value": 2.1,
  "width": 51.0
}
```

GET /books/<book_name_or_ix>/sheets

Example response:

```
{
  "sheets": [
```

(continues on next page)

(continued from previous page)

```
{
  "charts": [
    "Chart 1"
  ],
  "name": "Sheet1",
  "names": [
    "Sheet1!myname1"
  ],
  "pictures": [
    "Picture 3"
  ],
  "shapes": [
    "Chart 1",
    "Picture 3"
  ],
  "used_range": "$A$1:$B$2"
},
{
  "charts": [],
  "name": "Sheet2",
  "names": [],
  "pictures": [],
  "shapes": [],
  "used_range": "$A$1"
}
]
```

GET /books/<book_name_or_ix>/sheets/<sheet_name_or_ix>**Example response:**

```
{
  "charts": [
    "Chart 1"
  ],
  "name": "Sheet1",
  "names": [
    "Sheet1!myname1"
  ],
  "pictures": [
    "Picture 3"
  ],
  "shapes": [
    "Chart 1",
    "Picture 3"
  ],
  "used_range": "$A$1:$B$2"
}
```

GET /books/<book_name_or_ix>/sheets/<sheet_name_or_ix>/charts**Example response:**

```
{
  "charts": [
    {
      "chart_type": "line",
      "height": 211.0,
      "left": 0.0,
      "name": "Chart 1",
      "top": 0.0,
      "width": 355.0
    }
  ]
}
```

GET /books/<book_name_or_ix>/sheets/<sheet_name_or_ix>/charts/<chart_name_or_ix>

Example response:

```
{
  "chart_type": "line",
  "height": 211.0,
  "left": 0.0,
  "name": "Chart 1",
  "top": 0.0,
  "width": 355.0
}
```

GET /books/<book_name_or_ix>/sheets/<sheet_name_or_ix>/names

Example response:

```
{
  "names": [
    {
      "name": "Sheet1!myname1",
      "refers_to": "=Sheet1!$B$2:$C$3"
    }
  ]
}
```

GET /books/<book_name_or_ix>/sheets/<sheet_name_or_ix>/names/<sheet_scope_name>

Example response:

```
{
  "name": "Sheet1!myname1",
  "refers_to": "=Sheet1!$B$2:$C$3"
}
```

GET /books/<book_name_or_ix>/sheets/<sheet_name_or_ix>/names/<sheet_scope_name>/range

Example response:

```
{
  "address": "$B$2:$C$3",
  "color": null,
  "column": 2,
  "column_width": 8.47,
  "count": 4,
  "current_region": "$A$1:$B$2",
  "formula": [
    [
      "",
      ""
    ],
    [
      "",
      ""
    ]
  ],
  "formula_array": "",
  "height": 28.5,
  "last_cell": "$C$3",
  "left": 51.0,
  "name": "Sheet1!myname1",
  "number_format": "General",
  "row": 2,
  "row_height": 14.3,
  "shape": [
    2,
    2
  ],
  "size": 4,
  "top": 14.25,
  "value": [
    [
      null,
      null
    ],
    [
      null,
      null
    ]
  ],
  "width": 102.0
}
```

GET /books/<book_name_or_ix>/sheets/<sheet_name_or_ix>/pictures

Example response:

```
{
  "pictures": [
    {
      "height": 100.0,
      "left": 0.0,
```

(continues on next page)

(continued from previous page)

```

    "name": "Picture 3",
    "top": 0.0,
    "width": 100.0
  }
]
}

```

GET /books/<book_name_or_ix>/sheets/<sheet_name_or_ix>/pictures/<picture_name_or_ix>

Example response:

```

{
  "height": 100.0,
  "left": 0.0,
  "name": "Picture 3",
  "top": 0.0,
  "width": 100.0
}

```

GET /books/<book_name_or_ix>/sheets/<sheet_name_or_ix>/range

Example response:

```

{
  "address": "$A$1:$B$2",
  "color": null,
  "column": 1,
  "column_width": 8.47,
  "count": 4,
  "current_region": "$A$1:$B$2",
  "formula": [
    [
      "=1+1.1",
      "a string"
    ],
    [
      "43395.0064583333",
      ""
    ]
  ],
  "formula_array": null,
  "height": 28.5,
  "last_cell": "$B$2",
  "left": 0.0,
  "name": null,
  "number_format": null,
  "row": 1,
  "row_height": 14.3,
  "shape": [
    2,
    2
  ],
}

```

(continues on next page)

(continued from previous page)

```

"size": 4,
"top": 0.0,
"value": [
  [
    2.1,
    "a string"
  ],
  [
    "Mon, 22 Oct 2018 00:09:18 GMT",
    null
  ]
],
"width": 102.0
}

```

GET /books/<book_name_or_ix>/sheets/<sheet_name_or_ix>/range/<address>

Example response:

```

{
  "address": "$A$1:$B$2",
  "color": null,
  "column": 1,
  "column_width": 8.47,
  "count": 4,
  "current_region": "$A$1:$B$2",
  "formula": [
    [
      "=1+1.1",
      "a string"
    ],
    [
      "43395.0064583333",
      ""
    ]
  ],
  "formula_array": null,
  "height": 28.5,
  "last_cell": "$B$2",
  "left": 0.0,
  "name": null,
  "number_format": null,
  "row": 1,
  "row_height": 14.3,
  "shape": [
    2,
    2
  ],
  "size": 4,
  "top": 0.0,
  "value": [
    [

```

(continues on next page)

(continued from previous page)

```

    2.1,
    "a string"
  ],
  [
    "Mon, 22 Oct 2018 00:09:18 GMT",
    null
  ]
],
"width": 102.0
}

```

GET /books/<book_name_or_ix>/sheets/<sheet_name_or_ix>/shapes

Example response:

```

{
  "shapes": [
    {
      "height": 211.0,
      "left": 0.0,
      "name": "Chart 1",
      "top": 0.0,
      "type": "chart",
      "width": 355.0
    },
    {
      "height": 100.0,
      "left": 0.0,
      "name": "Picture 3",
      "top": 0.0,
      "type": "picture",
      "width": 100.0
    }
  ]
}

```

GET /books/<book_name_or_ix>/sheets/<sheet_name_or_ix>/shapes/<shape_name_or_ix>

Example response:

```

{
  "height": 211.0,
  "left": 0.0,
  "name": "Chart 1",
  "top": 0.0,
  "type": "chart",
  "width": 355.0
}

```

24.6.3 /apps

GET /apps

Example response:

```
{
  "apps": [
    {
      "books": [
        "Book1",
        "C:\\Users\\felix\\DEV\\xlwings\\scripts\\Book1.xlsx",
        "Book4"
      ],
      "calculation": "automatic",
      "display_alerts": true,
      "pid": 1104,
      "screen_updating": true,
      "selection": "[Book1.xlsx]Sheet2!$A$1",
      "version": "16.0",
      "visible": true
    },
    {
      "books": [
        "Book2",
        "Book5"
      ],
      "calculation": "automatic",
      "display_alerts": true,
      "pid": 7920,
      "screen_updating": true,
      "selection": "[Book5]Sheet2!$A$1",
      "version": "16.0",
      "visible": true
    }
  ]
}
```

GET /apps/<pid>

Example response:

```
{
  "books": [
    "Book1",
    "C:\\Users\\felix\\DEV\\xlwings\\scripts\\Book1.xlsx",
    "Book4"
  ],
  "calculation": "automatic",
  "display_alerts": true,
  "pid": 1104,
  "screen_updating": true,
  "selection": "[Book1.xlsx]Sheet2!$A$1",
```

(continues on next page)

(continued from previous page)

```

"version": "16.0",
"visible": true
}

```

GET /apps/<pid>/books

Example response:

```

{
  "books": [
    {
      "app": 1104,
      "fullname": "Book1",
      "name": "Book1",
      "names": [],
      "selection": "Sheet2!$A$1",
      "sheets": [
        "Sheet1"
      ]
    },
    {
      "app": 1104,
      "fullname": "C:\\Users\\felix\\DEV\\xlwings\\scripts\\Book1.xlsx",
      "name": "Book1.xlsx",
      "names": [
        "Sheet1!myname1",
        "myname2"
      ],
      "selection": "Sheet2!$A$1",
      "sheets": [
        "Sheet1",
        "Sheet2"
      ]
    },
    {
      "app": 1104,
      "fullname": "Book4",
      "name": "Book4",
      "names": [],
      "selection": "Sheet2!$A$1",
      "sheets": [
        "Sheet1"
      ]
    }
  ]
}

```

GET /apps/<pid>/books/<book_name_or_ix>

Example response:

```

{

```

(continues on next page)

(continued from previous page)

```
"app": 1104,
"fullname": "C:\\Users\\felix\\DEV\\xlwings\\scripts\\Book1.xlsx",
"name": "Book1.xlsx",
"names": [
  "Sheet1!myname1",
  "myname2"
],
"selection": "Sheet2!$A$1",
"sheets": [
  "Sheet1",
  "Sheet2"
]
}
```

GET /apps/<pid>/books/<book_name_or_ix>/names**Example response:**

```
{
  "names": [
    {
      "name": "Sheet1!myname1",
      "refers_to": "=Sheet1!$B$2:$C$3"
    },
    {
      "name": "myname2",
      "refers_to": "=Sheet1!$A$1"
    }
  ]
}
```

GET /apps/<pid>/books/<book_name_or_ix>/names/<name>**Example response:**

```
{
  "name": "myname2",
  "refers_to": "=Sheet1!$A$1"
}
```

GET /apps/<pid>/books/<book_name_or_ix>/names/<name>/range**Example response:**

```
{
  "address": "$A$1",
  "color": null,
  "column": 1,
  "column_width": 8.47,
  "count": 1,
  "current_region": "$A$1:$B$2",
  "formula": "=1+1.1",

```

(continues on next page)

(continued from previous page)

```

"formula_array": "=1+1,1",
"height": 14.25,
"last_cell": "$A$1",
"left": 0.0,
"name": "myname2",
"number_format": "General",
"row": 1,
"row_height": 14.3,
"shape": [
    1,
    1
],
"size": 1,
"top": 0.0,
"value": 2.1,
"width": 51.0
}

```

GET /apps/<pid>/books/<book_name_or_ix>/sheets

Example response:

```

{
  "sheets": [
    {
      "charts": [
        "Chart 1"
      ],
      "name": "Sheet1",
      "names": [
        "Sheet1!myname1"
      ],
      "pictures": [
        "Picture 3"
      ],
      "shapes": [
        "Chart 1",
        "Picture 3"
      ],
      "used_range": "$A$1:$B$2"
    },
    {
      "charts": [],
      "name": "Sheet2",
      "names": [],
      "pictures": [],
      "shapes": [],
      "used_range": "$A$1"
    }
  ]
}

```

GET /apps/<pid>/books/<book_name_or_ix>/sheets/<sheet_name_or_ix>

Example response:

```
{
  "charts": [
    "Chart 1"
  ],
  "name": "Sheet1",
  "names": [
    "Sheet1!myname1"
  ],
  "pictures": [
    "Picture 3"
  ],
  "shapes": [
    "Chart 1",
    "Picture 3"
  ],
  "used_range": "$A$1:$B$2"
}
```

GET /apps/<pid>/books/<book_name_or_ix>/sheets/<sheet_name_or_ix>/charts

Example response:

```
{
  "charts": [
    {
      "chart_type": "line",
      "height": 211.0,
      "left": 0.0,
      "name": "Chart 1",
      "top": 0.0,
      "width": 355.0
    }
  ]
}
```

GET /apps/<pid>/books/<book_name_or_ix>/sheets/<sheet_name_or_ix>/charts/<chart_name_or_ix>

Example response:

```
{
  "chart_type": "line",
  "height": 211.0,
  "left": 0.0,
  "name": "Chart 1",
  "top": 0.0,
  "width": 355.0
}
```

GET /apps/<pid>/books/<book_name_or_ix>/sheets/<sheet_name_or_ix>/names

Example response:


```
{
  "names": [
    {
      "name": "Sheet1!myname1",
      "refers_to": "=Sheet1!$B$2:$C$3"
    }
  ]
}
```

GET /apps/<pid>/books/<book_name_or_ix>/sheets/<sheet_name_or_ix>/names/<sheet_scope>

Example response:

```
{
  "name": "Sheet1!myname1",
  "refers_to": "=Sheet1!$B$2:$C$3"
}
```

GET /apps/<pid>/books/<book_name_or_ix>/sheets/<sheet_name_or_ix>/names/<sheet_scope>

Example response:

```
{
  "address": "$B$2:$C$3",
  "color": null,
  "column": 2,
  "column_width": 8.47,
  "count": 4,
  "current_region": "$A$1:$B$2",
  "formula": [
    [
      "",
      ""
    ],
    [
      "",
      ""
    ]
  ],
  "formula_array": "",
  "height": 28.5,
  "last_cell": "$C$3",
  "left": 51.0,
  "name": "Sheet1!myname1",
  "number_format": "General",
  "row": 2,
  "row_height": 14.3,
  "shape": [
    2,
    2
  ],
  "size": 4,
  "top": 14.25,
```

(continues on next page)

(continued from previous page)

```
"value": [
  [
    null,
    null
  ],
  [
    null,
    null
  ]
],
"width": 102.0
}
```

GET /apps/<pid>/books/<book_name_or_ix>/sheets/<sheet_name_or_ix>/pictures

Example response:

```
{
  "pictures": [
    {
      "height": 100.0,
      "left": 0.0,
      "name": "Picture 3",
      "top": 0.0,
      "width": 100.0
    }
  ]
}
```

GET /apps/<pid>/books/<book_name_or_ix>/sheets/<sheet_name_or_ix>/pictures/<picture_name_or_ix>

Example response:

```
{
  "height": 100.0,
  "left": 0.0,
  "name": "Picture 3",
  "top": 0.0,
  "width": 100.0
}
```

GET /apps/<pid>/books/<book_name_or_ix>/sheets/<sheet_name_or_ix>/range

Example response:

```
{
  "address": "$A$1:$B$2",
  "color": null,
  "column": 1,
  "column_width": 8.47,
  "count": 4,
  "current_region": "$A$1:$B$2",

```

(continues on next page)

(continued from previous page)

```

"formula": [
  [
    "=1+1.1",
    "a string"
  ],
  [
    "43395.0064583333",
    ""
  ]
],
"formula_array": null,
"height": 28.5,
"last_cell": "$B$2",
"left": 0.0,
"name": null,
"number_format": null,
"row": 1,
"row_height": 14.3,
"shape": [
  2,
  2
],
"size": 4,
"top": 0.0,
"value": [
  [
    2.1,
    "a string"
  ],
  [
    "Mon, 22 Oct 2018 00:09:18 GMT",
    null
  ]
],
"width": 102.0
}

```

GET /apps/<pid>/books/<book_name_or_ix>/sheets/<sheet_name_or_ix>/range/<address>

Example response:

```

{
  "address": "$A$1:$B$2",
  "color": null,
  "column": 1,
  "column_width": 8.47,
  "count": 4,
  "current_region": "$A$1:$B$2",
  "formula": [
    [
      "=1+1.1",
      "a string"
    ]
  ]
}

```

(continues on next page)

(continued from previous page)

```

    ],
    [
        "43395.0064583333",
        ""
    ]
],
"formula_array": null,
"height": 28.5,
"last_cell": "$B$2",
"left": 0.0,
"name": null,
"number_format": null,
"row": 1,
"row_height": 14.3,
"shape": [
    2,
    2
],
"size": 4,
"top": 0.0,
"value": [
    [
        2.1,
        "a string"
    ],
    [
        "Mon, 22 Oct 2018 00:09:18 GMT",
        null
    ]
],
"width": 102.0
}

```

GET /apps/<pid>/books/<book_name_or_ix>/sheets/<sheet_name_or_ix>/shapes

Example response:

```

{
  "shapes": [
    {
      "height": 211.0,
      "left": 0.0,
      "name": "Chart 1",
      "top": 0.0,
      "type": "chart",
      "width": 355.0
    },
    {
      "height": 100.0,
      "left": 0.0,
      "name": "Picture 3",
      "top": 0.0,

```

(continues on next page)

(continued from previous page)

```
    "type": "picture",
    "width": 100.0
  }
]
```

GET /apps/<pid>/books/<book_name_or_ix>/sheets/<sheet_name_or_ix>/shapes/<shape_name_or_ix>

Example response:

```
{
  "height": 211.0,
  "left": 0.0,
  "name": "Chart 1",
  "top": 0.0,
  "type": "chart",
  "width": 355.0
}
```


A

activate() (*xlwings.App* method), 85
 activate() (*xlwings.Book* method), 89
 activate() (*xlwings.Shape* method), 105
 activate() (*xlwings.Sheet* method), 92
 active (*xlwings.main.Apps* attribute), 84
 active (*xlwings.main.Books* attribute), 87
 active (*xlwings.main.Sheets* attribute), 92
 add() (*xlwings.main.Apps* method), 84
 add() (*xlwings.main.Books* method), 87
 add() (*xlwings.main.Charts* method), 106
 add() (*xlwings.main.Names* method), 110
 add() (*xlwings.main.Pictures* method), 108
 add() (*xlwings.main.Sheets* method), 92
 add_hyperlink() (*xlwings.Range* method), 95
 address (*xlwings.Range* attribute), 95
 api (*xlwings.App* attribute), 85
 api (*xlwings.Book* attribute), 89
 api (*xlwings.Chart* attribute), 107
 api (*xlwings.main.Charts* attribute), 107
 api (*xlwings.main.Names* attribute), 111
 api (*xlwings.main.Pictures* attribute), 109
 api (*xlwings.main.Shapes* attribute), 105
 api (*xlwings.Name* attribute), 111
 api (*xlwings.Picture* attribute), 109
 api (*xlwings.Range* attribute), 95
 api (*xlwings.Sheet* attribute), 92
 App (class in *xlwings*), 84
 app (*xlwings.Book* attribute), 89
 Apps (class in *xlwings.main*), 84
 autofit() (*xlwings.Range* method), 95
 autofit() (*xlwings.RangeColumns* method), 105
 autofit() (*xlwings.RangeRows* method), 104
 autofit() (*xlwings.Sheet* method), 93

B

Book (class in *xlwings*), 88
 book (*xlwings.Sheet* attribute), 93
 Books (class in *xlwings.main*), 87
 books (*xlwings.App* attribute), 85

C

calculate() (*xlwings.App* method), 85
 calculation (*xlwings.App* attribute), 85
 caller() (*xlwings.Book* class method), 89
 cells (*xlwings.Sheet* attribute), 93
 Chart (class in *xlwings*), 107
 chart_type (*xlwings.Chart* attribute), 107
 Charts (class in *xlwings.main*), 106
 charts (*xlwings.Sheet* attribute), 93
 clear() (*xlwings.Range* method), 95
 clear() (*xlwings.Sheet* method), 93
 clear_contents() (*xlwings.Range* method), 95
 clear_contents() (*xlwings.Sheet* method), 93
 close() (*xlwings.Book* method), 90
 color (*xlwings.Range* attribute), 95
 column (*xlwings.Range* attribute), 96
 column_width (*xlwings.Range* attribute), 96
 columns (*xlwings.Range* attribute), 96
 copy() (*xlwings.Range* method), 96
 count (*xlwings.main.Apps* attribute), 84
 count (*xlwings.main.Charts* attribute), 107
 count (*xlwings.main.Names* attribute), 111
 count (*xlwings.main.Pictures* attribute), 109
 count (*xlwings.main.Shapes* attribute), 105
 count (*xlwings.Range* attribute), 97
 count (*xlwings.RangeColumns* attribute), 105
 count (*xlwings.RangeRows* attribute), 104
 create_report() (in module *xlwings.pro.reports*), 113

`current_region` (*xlwings.Range attribute*), 97

D

`delete()` (*xlwings.Chart method*), 107

`delete()` (*xlwings.Name method*), 111

`delete()` (*xlwings.Picture method*), 109

`delete()` (*xlwings.Range method*), 97

`delete()` (*xlwings.Shape method*), 105

`delete()` (*xlwings.Sheet method*), 93

`display_alerts` (*xlwings.App attribute*), 85

E

`end()` (*xlwings.Range method*), 97

`expand()` (*xlwings.Range method*), 97

F

`formula` (*xlwings.Range attribute*), 98

`formula2` (*xlwings.Range attribute*), 98

`formula_array` (*xlwings.Range attribute*), 98

`fullname` (*xlwings.Book attribute*), 90

G

`get_address()` (*xlwings.Range method*), 98

H

`height` (*xlwings.Chart attribute*), 107

`height` (*xlwings.Picture attribute*), 110

`height` (*xlwings.Range attribute*), 99

`height` (*xlwings.Shape attribute*), 105

`hwnd` (*xlwings.App attribute*), 86

`hyperlink` (*xlwings.Range attribute*), 99

I

`index` (*xlwings.Sheet attribute*), 93

`insert()` (*xlwings.Range method*), 99

K

`keys()` (*xlwings.main.Apps method*), 84

`kill()` (*xlwings.App method*), 86

L

`last_cell` (*xlwings.Range attribute*), 99

`left` (*xlwings.Chart attribute*), 107

`left` (*xlwings.Picture attribute*), 110

`left` (*xlwings.Range attribute*), 100

`left` (*xlwings.Shape attribute*), 106

M

`macro()` (*xlwings.App method*), 86

`macro()` (*xlwings.Book method*), 90

`merge()` (*xlwings.Range method*), 100

`merge_area` (*xlwings.Range attribute*), 100

`merge_cells` (*xlwings.Range attribute*), 100

N

`Name` (*class in xlwings*), 111

`name` (*xlwings.Book attribute*), 90

`name` (*xlwings.Chart attribute*), 107

`name` (*xlwings.Name attribute*), 111

`name` (*xlwings.Picture attribute*), 110

`name` (*xlwings.Range attribute*), 100

`name` (*xlwings.Shape attribute*), 106

`name` (*xlwings.Sheet attribute*), 93

`Names` (*class in xlwings.main*), 110

`names` (*xlwings.Book attribute*), 90

`names` (*xlwings.Sheet attribute*), 93

`number_format` (*xlwings.Range attribute*), 100

O

`offset()` (*xlwings.Range method*), 101

`open()` (*xlwings.main.Books method*), 87

`options()` (*xlwings.Range method*), 101

P

`parent` (*xlwings.Chart attribute*), 108

`parent` (*xlwings.Picture attribute*), 110

`parent` (*xlwings.Shape attribute*), 106

`paste()` (*xlwings.Range method*), 101

`Picture` (*class in xlwings*), 109

`Pictures` (*class in xlwings.main*), 108

`pictures` (*xlwings.Sheet attribute*), 94

`pid` (*xlwings.App attribute*), 86

Q

`quit()` (*xlwings.App method*), 86

R

`Range` (*class in xlwings*), 94

`range()` (*xlwings.App method*), 86

`range()` (*xlwings.Sheet method*), 94

`RangeColumns` (*class in xlwings*), 104

`RangeRows` (*class in xlwings*), 104

`raw_value` (*xlwings.Range attribute*), 102

`refers_to` (*xlwings.Name attribute*), 111

`refers_to_range` (*xlwings.Name attribute*),
111

`resize()` (*xlwings.Range method*), 102

`row` (*xlwings.Range attribute*), 102
`row_height` (*xlwings.Range attribute*), 102
`rows` (*xlwings.Range attribute*), 103

S

`save()` (*xlwings.Book method*), 91
`screen_updating` (*xlwings.App attribute*), 86
`select()` (*xlwings.Range method*), 103
`select()` (*xlwings.Sheet method*), 94
`selection` (*xlwings.App attribute*), 87
`selection` (*xlwings.Book attribute*), 91
`set_mock_caller()` (*xlwings.Book method*), 91
`set_source_data()` (*xlwings.Chart method*), 108
`Shape` (*class in xlwings*), 105
`shape` (*xlwings.Range attribute*), 103
`Shapes` (*class in xlwings.main*), 105
`shapes` (*xlwings.Sheet attribute*), 94
`Sheet` (*class in xlwings*), 92
`sheet` (*xlwings.Range attribute*), 103
`Sheets` (*class in xlwings.main*), 92
`sheets` (*xlwings.Book attribute*), 91
`size` (*xlwings.Range attribute*), 103

T

`top` (*xlwings.Chart attribute*), 108
`top` (*xlwings.Picture attribute*), 110
`top` (*xlwings.Range attribute*), 103
`top` (*xlwings.Shape attribute*), 106
`type` (*xlwings.Shape attribute*), 106

U

`unmerge()` (*xlwings.Range method*), 103
`update()` (*xlwings.Picture method*), 110
`used_range` (*xlwings.Sheet attribute*), 94

V

`value` (*xlwings.Range attribute*), 103
`version` (*xlwings.App attribute*), 87
`view()` (*in module xlwings*), 83
`visible` (*xlwings.App attribute*), 87

W

`width` (*xlwings.Chart attribute*), 108
`width` (*xlwings.Picture attribute*), 110
`width` (*xlwings.Range attribute*), 103
`width` (*xlwings.Shape attribute*), 106

X

`xlwings` (*module*), 83
`xlwings.arg()` (*in module xlwings*), 112
`xlwings.func()` (*in module xlwings*), 112
`xlwings.pro.reports` (*module*), 113
`xlwings.ret()` (*in module xlwings*), 112
`xlwings.sub()` (*in module xlwings*), 112